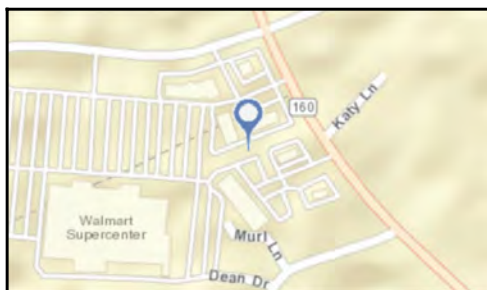
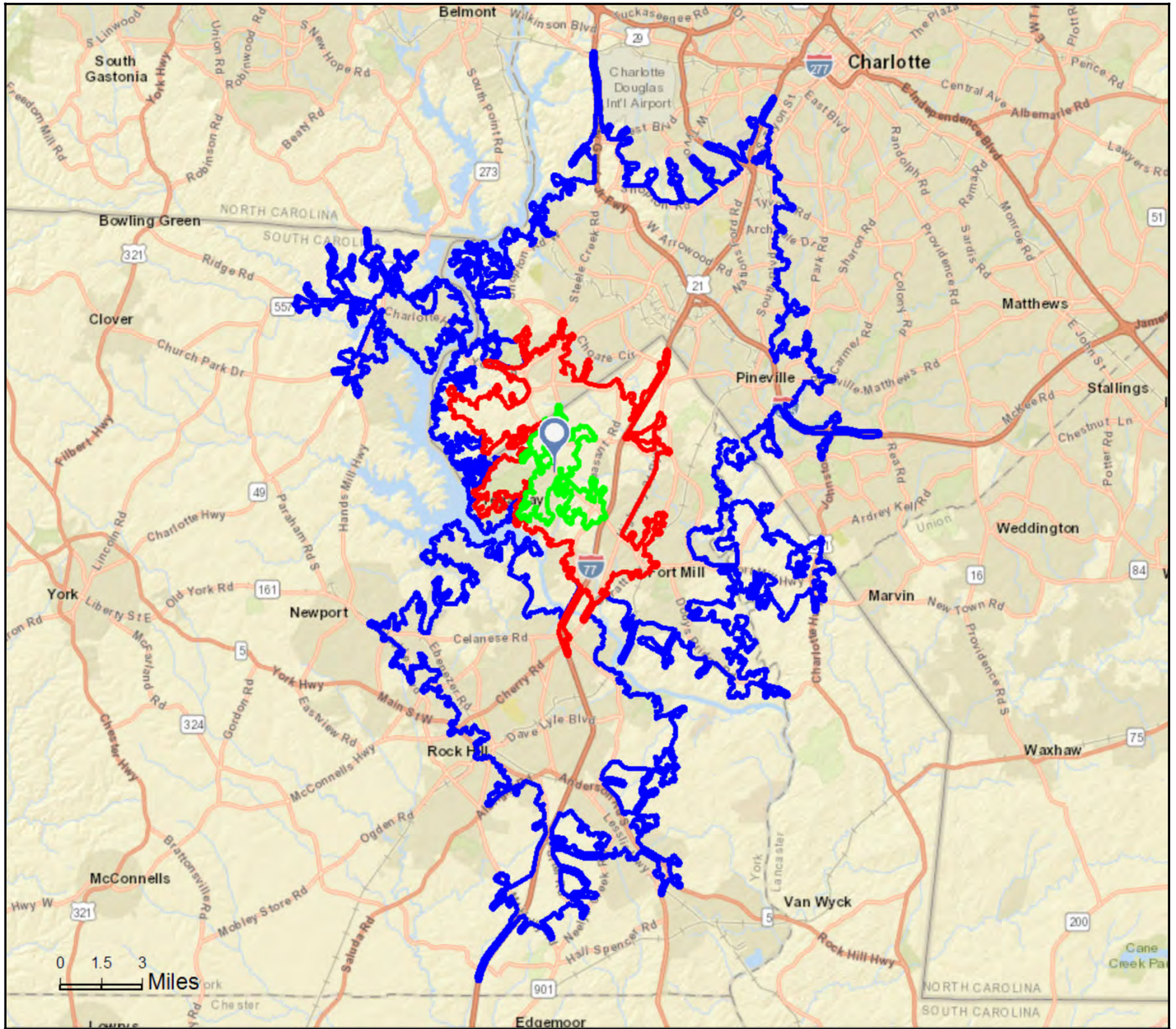


Site Map

Stonecrest, Tega Cay, SC
 2451 Highway 160 W, Fort Mill, South Carolina, 29708
 Drive Time: 5, 10, 20 minute radii

Prepared by YCED
 Latitude: 35.04714
 Longitude: -80.99151



Market Profile

Stonecrest, Tega Cay, SC
2451 Highway 160 W, Fort Mill, South Carolina, 29708
Drive Time: 5, 10, 20 minute radii

Prepared by YCED
Latitude: 35.04714
Longitude: -80.99151

	5 minutes	10 minutes	20 minutes
Population Summary			
2000 Total Population	1,787	13,331	130,039
2010 Total Population	5,962	30,818	200,923
2016 Total Population	7,197	38,173	234,313
2016 Group Quarters	0	0	2,914
2021 Total Population	8,117	43,549	262,253
2016-2021 Annual Rate	2.44%	2.67%	2.28%
2016 Total Daytime Population	6,290	34,360	303,221
Workers	2,619	15,828	189,543
Residents	3,671	18,532	113,678
Household Summary			
2000 Households	699	4,848	50,893
2000 Average Household Size	2.56	2.74	2.49
2010 Households	2,355	11,310	78,476
2010 Average Household Size	2.53	2.72	2.52
2016 Households	2,802	13,805	90,034
2016 Average Household Size	2.57	2.77	2.57
2021 Households	3,148	15,655	100,213
2021 Average Household Size	2.58	2.78	2.59
2016-2021 Annual Rate	2.36%	2.55%	2.17%
2010 Families	1,705	8,612	51,198
2010 Average Family Size	2.99	3.14	3.08
2016 Families	2,014	10,413	58,498
2016 Average Family Size	3.04	3.20	3.15
2021 Families	2,252	11,757	64,927
2021 Average Family Size	3.06	3.23	3.18
2016-2021 Annual Rate	2.26%	2.46%	2.11%
Housing Unit Summary			
2000 Housing Units	777	5,241	54,949
Owner Occupied Housing Units	65.6%	72.6%	58.0%
Renter Occupied Housing Units	24.3%	19.9%	34.6%
Vacant Housing Units	10.0%	7.5%	7.4%
2010 Housing Units	2,528	12,166	86,327
Owner Occupied Housing Units	72.1%	75.4%	56.3%
Renter Occupied Housing Units	21.0%	17.5%	34.6%
Vacant Housing Units	6.8%	7.0%	9.1%
2016 Housing Units	2,979	14,820	98,144
Owner Occupied Housing Units	70.8%	73.9%	55.3%
Renter Occupied Housing Units	23.3%	19.2%	36.5%
Vacant Housing Units	5.9%	6.8%	8.3%
2021 Housing Units	3,342	16,746	108,854
Owner Occupied Housing Units	70.8%	74.3%	55.6%
Renter Occupied Housing Units	23.4%	19.2%	36.5%
Vacant Housing Units	5.8%	6.5%	7.9%
Median Household Income			
2016	\$76,799	\$85,519	\$56,508
2021	\$93,858	\$99,146	\$63,773
Median Home Value			
2016	\$265,615	\$251,173	\$193,881
2021	\$272,685	\$261,297	\$220,248
Per Capita Income			
2016	\$36,916	\$37,951	\$29,257
2021	\$41,049	\$41,356	\$32,040
Median Age			
2010	36.8	36.5	34.0
2016	37.8	37.7	35.2
2021	38.0	37.7	35.5

Data Note: Household population includes persons not residing in group quarters. Average Household Size is the household population divided by total households. Persons in families include the householder and persons related to the householder by birth, marriage, or adoption. Per Capita Income represents the income received by all persons aged 15 years and over divided by the total population.

Source: U.S. Census Bureau, Census 2010 Summary File 1. Esri forecasts for 2016 and 2021 Esri converted Census 2000 data into 2010 geography.

Market Profile

Stonecrest, Tega Cay, SC
2451 Highway 160 W, Fort Mill, South Carolina, 29708
Drive Time: 5, 10, 20 minute radii

Prepared by YCED
Latitude: 35.04714
Longitude: -80.99151

	5 minutes	10 minutes	20 minutes
2016 Households by Income			
Household Income Base	2,802	13,805	90,032
<\$15,000	6.8%	5.0%	9.8%
\$15,000 - \$24,999	4.7%	5.2%	9.6%
\$25,000 - \$34,999	5.0%	4.9%	10.2%
\$35,000 - \$49,999	14.0%	11.3%	14.0%
\$50,000 - \$74,999	18.3%	16.7%	18.4%
\$75,000 - \$99,999	11.9%	13.9%	13.5%
\$100,000 - \$149,999	22.2%	23.6%	14.6%
\$150,000 - \$199,999	9.1%	11.0%	5.5%
\$200,000+	8.0%	8.3%	4.3%
Average Household Income	\$97,972	\$103,915	\$75,820
2021 Households by Income			
Household Income Base	3,148	15,655	100,211
<\$15,000	6.1%	4.4%	9.4%
\$15,000 - \$24,999	5.0%	5.2%	9.7%
\$25,000 - \$34,999	3.4%	3.6%	8.7%
\$35,000 - \$49,999	9.4%	7.5%	9.7%
\$50,000 - \$74,999	16.9%	16.4%	19.4%
\$75,000 - \$99,999	11.5%	13.2%	14.1%
\$100,000 - \$149,999	27.5%	27.5%	17.5%
\$150,000 - \$199,999	11.5%	13.3%	6.7%
\$200,000+	8.7%	8.8%	4.7%
Average Household Income	\$109,725	\$113,936	\$83,563
2016 Owner Occupied Housing Units by Value			
Total	2,109	10,958	54,245
<\$50,000	3.8%	2.5%	4.1%
\$50,000 - \$99,999	0.9%	1.9%	8.3%
\$100,000 - \$149,999	8.6%	9.1%	20.1%
\$150,000 - \$199,999	10.0%	14.1%	20.0%
\$200,000 - \$249,999	22.1%	22.2%	16.6%
\$250,000 - \$299,999	14.7%	11.5%	8.3%
\$300,000 - \$399,999	23.4%	20.4%	10.3%
\$400,000 - \$499,999	9.3%	11.6%	5.9%
\$500,000 - \$749,999	2.2%	3.6%	3.4%
\$750,000 - \$999,999	3.0%	1.9%	1.8%
\$1,000,000 +	2.0%	1.2%	1.2%
Average Home Value	\$309,009	\$297,839	\$242,053
2021 Owner Occupied Housing Units by Value			
Total	2,365	12,447	60,482
<\$50,000	1.4%	1.0%	2.3%
\$50,000 - \$99,999	0.3%	0.9%	5.7%
\$100,000 - \$149,999	2.8%	3.9%	11.3%
\$150,000 - \$199,999	8.3%	12.0%	21.3%
\$200,000 - \$249,999	27.8%	28.6%	23.2%
\$250,000 - \$299,999	20.5%	15.4%	11.7%
\$300,000 - \$399,999	21.4%	18.2%	10.4%
\$400,000 - \$499,999	8.7%	11.6%	5.9%
\$500,000 - \$749,999	2.8%	4.3%	4.3%
\$750,000 - \$999,999	4.1%	2.6%	2.6%
\$1,000,000 +	1.9%	1.2%	1.2%
Average Home Value	\$328,224	\$315,018	\$268,683

Data Note: Income represents the preceding year, expressed in current dollars. Household income includes wage and salary earnings, interest dividends, net rents, pensions, SSI and welfare payments, child support, and alimony.

Source: U.S. Census Bureau, Census 2010 Summary File 1. Esri forecasts for 2016 and 2021 Esri converted Census 2000 data into 2010 geography.

Market Profile

Stonecrest, Tega Cay, SC
2451 Highway 160 W, Fort Mill, South Carolina, 29708
Drive Time: 5, 10, 20 minute radii

Prepared by YCED
Latitude: 35.04714
Longitude: -80.99151

	5 minutes	10 minutes	20 minutes
2010 Population by Age			
Total	5,958	30,819	200,923
0 - 4	7.7%	7.9%	7.7%
5 - 9	8.9%	8.8%	7.3%
10 - 14	7.7%	8.1%	6.8%
15 - 24	9.3%	9.6%	13.4%
25 - 34	12.7%	12.6%	16.5%
35 - 44	19.1%	18.8%	16.0%
45 - 54	13.6%	15.3%	13.4%
55 - 64	10.1%	10.3%	9.8%
65 - 74	7.2%	5.6%	5.3%
75 - 84	2.9%	2.3%	2.7%
85 +	0.8%	0.6%	1.1%
18 +	71.7%	70.7%	74.4%
2016 Population by Age			
Total	7,196	38,173	234,313
0 - 4	7.4%	7.3%	7.2%
5 - 9	8.4%	8.3%	7.3%
10 - 14	8.1%	8.2%	7.0%
15 - 24	9.6%	10.8%	13.4%
25 - 34	11.1%	10.8%	14.9%
35 - 44	18.9%	17.5%	15.6%
45 - 54	13.9%	15.2%	13.4%
55 - 64	10.7%	11.4%	10.5%
65 - 74	7.8%	7.1%	6.7%
75 - 84	3.2%	2.5%	2.9%
85 +	0.9%	0.8%	1.2%
18 +	72.3%	72.0%	74.9%
2021 Population by Age			
Total	8,115	43,548	262,252
0 - 4	7.3%	7.1%	7.1%
5 - 9	8.3%	8.0%	7.1%
10 - 14	7.8%	8.0%	7.0%
15 - 24	9.6%	10.6%	13.2%
25 - 34	11.1%	11.7%	14.9%
35 - 44	18.8%	16.6%	15.2%
45 - 54	13.2%	14.1%	12.8%
55 - 64	11.1%	12.0%	10.7%
65 - 74	8.0%	7.9%	7.4%
75 - 84	3.7%	3.2%	3.4%
85 +	1.1%	0.9%	1.2%
18 +	72.5%	72.6%	75.1%
2010 Population by Sex			
Males	2,883	15,052	96,939
Females	3,079	15,766	103,984
2016 Population by Sex			
Males	3,501	18,672	113,474
Females	3,697	19,501	120,839
2021 Population by Sex			
Males	3,967	21,325	126,927
Females	4,150	22,224	135,326

Source: U.S. Census Bureau, Census 2010 Summary File 1. Esri forecasts for 2016 and 2021 Esri converted Census 2000 data into 2010 geography.

Market Profile

Stonecrest, Tega Cay, SC
2451 Highway 160 W, Fort Mill, South Carolina, 29708
Drive Time: 5, 10, 20 minute radii

Prepared by YCED
Latitude: 35.04714
Longitude: -80.99151

	5 minutes	10 minutes	20 minutes
2010 Population by Race/Ethnicity			
Total	5,962	30,819	200,923
White Alone	86.6%	81.9%	63.9%
Black Alone	7.3%	10.6%	22.7%
American Indian Alone	0.4%	0.4%	0.6%
Asian Alone	2.5%	3.4%	3.7%
Pacific Islander Alone	0.1%	0.1%	0.1%
Some Other Race Alone	1.4%	1.7%	6.5%
Two or More Races	1.6%	1.9%	2.6%
Hispanic Origin	4.1%	5.3%	13.6%
Diversity Index	30.2	38.5	64.7
2016 Population by Race/Ethnicity			
Total	7,198	38,173	234,312
White Alone	85.2%	79.1%	61.9%
Black Alone	7.6%	11.8%	22.9%
American Indian Alone	0.4%	0.4%	0.5%
Asian Alone	3.1%	4.3%	4.6%
Pacific Islander Alone	0.1%	0.1%	0.1%
Some Other Race Alone	1.6%	2.0%	7.0%
Two or More Races	2.0%	2.3%	3.0%
Hispanic Origin	4.9%	6.4%	14.8%
Diversity Index	33.6	43.5	67.3
2021 Population by Race/Ethnicity			
Total	8,118	43,549	262,253
White Alone	83.5%	76.9%	59.7%
Black Alone	7.9%	12.4%	23.4%
American Indian Alone	0.4%	0.4%	0.5%
Asian Alone	3.7%	5.3%	5.4%
Pacific Islander Alone	0.1%	0.1%	0.1%
Some Other Race Alone	1.8%	2.2%	7.5%
Two or More Races	2.5%	2.8%	3.4%
Hispanic Origin	5.6%	7.2%	16.0%
Diversity Index	36.9	47.2	69.7
2010 Population by Relationship and Household Type			
Total	5,962	30,818	200,923
In Households	100.0%	100.0%	98.6%
In Family Households	86.9%	89.2%	81.2%
Householder	28.2%	28.2%	25.4%
Spouse	22.5%	23.0%	18.1%
Child	32.8%	34.1%	30.7%
Other relative	2.0%	2.5%	4.3%
Nonrelative	1.4%	1.4%	2.6%
In Nonfamily Households	13.1%	10.8%	17.4%
In Group Quarters	0.0%	0.0%	1.4%
Institutionalized Population	0.0%	0.0%	0.5%
Noninstitutionalized Population	0.0%	0.0%	1.0%

Data Note: Persons of Hispanic Origin may be of any race. The Diversity Index measures the probability that two people from the same area will be from different race/ethnic groups.

Source: U.S. Census Bureau, Census 2010 Summary File 1. Esri forecasts for 2016 and 2021 Esri converted Census 2000 data into 2010 geography.

Market Profile

Stonecrest, Tega Cay, SC
2451 Highway 160 W, Fort Mill, South Carolina, 29708
Drive Time: 5, 10, 20 minute radii

Prepared by YCED
Latitude: 35.04714
Longitude: -80.99151

	5 minutes	10 minutes	20 minutes
2016 Population 25+ by Educational Attainment			
Total	4,789	24,952	152,812
Less than 9th Grade	1.3%	1.7%	4.4%
9th - 12th Grade, No Diploma	4.2%	3.3%	5.7%
High School Graduate	14.7%	14.1%	19.4%
GED/Alternative Credential	2.0%	2.4%	2.6%
Some College, No Degree	16.1%	19.1%	22.4%
Associate Degree	11.5%	10.1%	8.5%
Bachelor's Degree	36.4%	35.1%	25.5%
Graduate/Professional Degree	13.8%	14.3%	11.5%
2016 Population 15+ by Marital Status			
Total	5,484	29,061	184,133
Never Married	25.2%	24.4%	33.8%
Married	60.5%	63.1%	51.2%
Widowed	3.6%	3.0%	4.2%
Divorced	10.7%	9.5%	10.8%
2016 Civilian Population 16+ in Labor Force			
Civilian Employed	96.0%	95.2%	93.8%
Civilian Unemployed	4.0%	4.8%	6.2%
2016 Employed Population 16+ by Industry			
Total	3,592	20,017	122,949
Agriculture/Mining	0.0%	0.0%	0.1%
Construction	3.2%	4.1%	6.2%
Manufacturing	12.5%	11.5%	10.7%
Wholesale Trade	5.5%	5.1%	3.8%
Retail Trade	12.8%	9.3%	12.7%
Transportation/Utilities	4.5%	6.5%	5.8%
Information	3.4%	2.7%	2.6%
Finance/Insurance/Real Estate	16.4%	15.8%	10.4%
Services	39.3%	42.2%	45.2%
Public Administration	2.4%	2.7%	2.5%
2016 Employed Population 16+ by Occupation			
Total	3,590	20,018	122,948
White Collar	75.5%	77.0%	65.0%
Management/Business/Financial	25.5%	26.3%	17.9%
Professional	23.7%	24.0%	20.7%
Sales	18.0%	14.4%	12.7%
Administrative Support	8.2%	12.2%	13.7%
Services	14.1%	12.1%	15.8%
Blue Collar	10.3%	11.0%	19.2%
Farming/Forestry/Fishing	0.0%	0.0%	0.1%
Construction/Extraction	0.4%	2.1%	4.8%
Installation/Maintenance/Repair	3.4%	3.0%	2.8%
Production	3.1%	2.4%	5.2%
Transportation/Material Moving	3.4%	3.4%	6.3%
2010 Population By Urban/ Rural Status			
Total Population	5,962	30,818	200,923
Population Inside Urbanized Area	96.4%	97.1%	96.5%
Population Inside Urbanized Cluster	0.0%	0.0%	0.0%
Rural Population	3.6%	2.9%	3.5%

Source: U.S. Census Bureau, Census 2010 Summary File 1. Esri forecasts for 2016 and 2021 Esri converted Census 2000 data into 2010 geography.

April 20, 2017

Market Profile

Stonecrest, Tega Cay, SC
2451 Highway 160 W, Fort Mill, South Carolina, 29708
Drive Time: 5, 10, 20 minute radii

Prepared by YCED
Latitude: 35.04714
Longitude: -80.99151

	5 minutes	10 minutes	20 minutes
2010 Households by Type			
Total	2,355	11,310	78,476
Households with 1 Person	23.0%	19.2%	27.2%
Households with 2+ People	77.0%	80.8%	72.8%
Family Households	72.4%	76.1%	65.2%
Husband-wife Families	58.0%	62.0%	46.5%
With Related Children	30.0%	33.4%	23.0%
Other Family (No Spouse Present)	14.4%	14.1%	18.7%
Other Family with Male Householder	2.9%	3.2%	4.8%
With Related Children	2.1%	2.1%	2.9%
Other Family with Female Householder	11.4%	10.9%	13.9%
With Related Children	8.5%	8.1%	9.9%
Nonfamily Households	4.6%	4.6%	7.5%
All Households with Children	40.8%	43.9%	36.3%
Multigenerational Households	2.2%	2.9%	3.7%
Unmarried Partner Households	5.2%	5.1%	6.9%
Male-female	4.5%	4.4%	6.1%
Same-sex	0.7%	0.8%	0.8%
2010 Households by Size			
Total	2,354	11,309	78,476
1 Person Household	23.0%	19.2%	27.2%
2 Person Household	33.5%	33.1%	32.0%
3 Person Household	18.6%	19.4%	17.1%
4 Person Household	16.6%	18.6%	14.0%
5 Person Household	6.3%	7.0%	6.1%
6 Person Household	1.5%	2.1%	2.3%
7 + Person Household	0.5%	0.7%	1.3%
2010 Households by Tenure and Mortgage Status			
Total	2,355	11,310	78,476
Owner Occupied	77.4%	81.1%	62.0%
Owned with a Mortgage/Loan	64.5%	70.0%	51.8%
Owned Free and Clear	12.9%	11.1%	10.2%
Renter Occupied	22.6%	18.9%	38.0%
2010 Housing Units By Urban/ Rural Status			
Total Housing Units	2,528	12,166	86,327
Housing Units Inside Urbanized Area	95.8%	96.7%	96.2%
Housing Units Inside Urbanized Cluster	0.0%	0.0%	0.0%
Rural Housing Units	4.2%	3.3%	3.8%

Data Note: Households with children include any households with people under age 18, related or not. Multigenerational households are families with 3 or more parent-child relationships. Unmarried partner households are usually classified as nonfamily households unless there is another member of the household related to the householder. Multigenerational and unmarried partner households are reported only to the tract level. Esri estimated block group data, which is used to estimate polygons or non-standard geography.

Source: U.S. Census Bureau, Census 2010 Summary File 1. Esri forecasts for 2016 and 2021 Esri converted Census 2000 data into 2010 geography.

Market Profile

Stonecrest, Tega Cay, SC
2451 Highway 160 W, Fort Mill, South Carolina, 29708
Drive Time: 5, 10, 20 minute radii

Prepared by YCED
Latitude: 35.04714
Longitude: -80.99151

	5 minutes	10 minutes	20 minutes
Top 3 Tapestry Segments			
1.	Middleburg (4C)	Boomburbs (1C)	Bright Young Professionals
2.	Boomburbs (1C)	Middleburg (4C)	Middleburg (4C)
3.	Top Tier (1A)	Savvy Suburbanites (1D)	Up and Coming Families
2016 Consumer Spending			
Apparel & Services: Total \$	\$7,088,035	\$36,800,618	\$182,921,786
Average Spent	\$2,529.63	\$2,665.75	\$2,031.70
Spending Potential Index	126	132	101
Education: Total \$	\$4,651,467	\$25,307,995	\$121,866,532
Average Spent	\$1,660.05	\$1,833.25	\$1,353.56
Spending Potential Index	117	130	96
Entertainment/Recreation: Total \$	\$10,394,643	\$53,997,014	\$257,519,859
Average Spent	\$3,709.72	\$3,911.41	\$2,860.25
Spending Potential Index	127	134	98
Food at Home: Total \$	\$16,914,760	\$87,124,480	\$444,733,486
Average Spent	\$6,036.67	\$6,311.08	\$4,939.62
Spending Potential Index	121	127	99
Food Away from Home: Total \$	\$11,072,967	\$57,122,017	\$283,947,368
Average Spent	\$3,951.81	\$4,137.78	\$3,153.78
Spending Potential Index	128	134	102
Health Care: Total \$	\$18,204,765	\$94,522,385	\$448,491,722
Average Spent	\$6,497.06	\$6,846.97	\$4,981.36
Spending Potential Index	123	129	94
HH Furnishings & Equipment: Total \$	\$6,383,018	\$33,207,363	\$158,076,743
Average Spent	\$2,278.02	\$2,405.46	\$1,755.74
Spending Potential Index	129	136	99
Personal Care Products & Services: Total \$	\$2,580,652	\$13,432,190	\$65,197,554
Average Spent	\$921.00	\$972.99	\$724.14
Spending Potential Index	126	133	99
Shelter: Total \$	\$54,087,583	\$282,970,455	\$1,409,744,182
Average Spent	\$19,303.21	\$20,497.68	\$15,657.91
Spending Potential Index	124	132	101
Support Payments/Cash Contributions/Gifts in Kind: Total \$	\$8,200,962	\$42,794,740	\$199,867,066
Average Spent	\$2,926.82	\$3,099.94	\$2,219.91
Spending Potential Index	126	134	96
Travel: Total \$	\$6,802,428	\$36,134,204	\$161,715,917
Average Spent	\$2,427.70	\$2,617.47	\$1,796.16
Spending Potential Index	130	141	97
Vehicle Maintenance & Repairs: Total \$	\$3,594,492	\$18,652,679	\$91,191,566
Average Spent	\$1,282.83	\$1,351.15	\$1,012.86
Spending Potential Index	124	131	98

Data Note: Consumer spending shows the amount spent on a variety of goods and services by households that reside in the area. Expenditures are shown by broad budget categories that are not mutually exclusive. Consumer spending does not equal business revenue. Total and Average Amount Spent Per Household represent annual figures. The Spending Potential Index represents the amount spent in the area relative to a national average of 100.

Source: Consumer Spending data are derived from the 2013 and 2014 Consumer Expenditure Surveys, Bureau of Labor Statistics. Esri.

Source: U.S. Census Bureau, Census 2010 Summary File 1. Esri forecasts for 2016 and 2021 Esri converted Census 2000 data into 2010 geography.

Automotive Aftermarket Expenditures

Stonecrest, Tega Cay, SC
2451 Highway 160 W, Fort Mill, South Carolina, 29708
Drive Time: 5 minute radius

Prepared by YCED
Latitude: 35.04714
Longitude: -80.99151

Demographic Summary		2016	2021
Population		7,197	8,117
Households		2,802	3,148
Families		2,014	2,252
Median Age		37.8	38.0
Median Household Income		\$76,799	\$93,858

	Spending Potential Index	Average Amount Spent	Total
Transportation - Local			
Payments on Vehicles excluding Leases	133	\$2,765.37	\$7,748,571
Gasoline and Motor Oil			
Gasoline	125	\$3,757.52	\$10,528,571
Diesel Fuel	130	\$72.76	\$203,866
Motor Oil	118	\$18.51	\$51,866
Other Vehicle Expenses			
Vehicle Maintenance & Repairs	124	\$1,282.83	\$3,594,492
Vehicle Coolant/Brake/Transmission Fluids	115	\$9.09	\$25,471
Tire Purchase/Replacement	119	\$192.72	\$540,009
Vehicle Parts/Equipment/Accessories	118	\$77.42	\$216,942
Vehicle Accessories including Labor	135	\$15.86	\$44,442
Vehicle Cleaning Services including Car Washes	130	\$26.93	\$75,456
Miscellaneous Auto Repair/Service	133	\$164.05	\$459,673
Vehicle Body Work & Painting	117	\$40.70	\$114,039
Vehicle or Engine Repairs	124	\$272.50	\$763,544
Vehicle Motor Tune-up	134	\$87.53	\$245,261
Lube/Oil Change & Oil Filters	125	\$131.24	\$367,743
Vehicle Front End Alignment/Wheel Balance & Rotation	114	\$38.13	\$106,830
Vehicle Shock Absorber Replacement	128	\$20.17	\$56,527
Tire Repair and Other Repair Work	119	\$170.56	\$477,921
Auto Repair Service Policy	136	\$35.92	\$100,635
Vehicle Insurance	123	\$1,378.15	\$3,861,587
Rental of Vehicles excluding Trips	132	\$46.66	\$130,736
Leased Vehicles	113	\$342.80	\$960,512
Basic Lease Charge for Cars/Trucks	112	\$303.39	\$850,109
Car/Truck Lease Fees & Down Payments	126	\$39.40	\$110,403
Vehicle Pers Property Taxes/State & Local Registr Fees	129	\$211.80	\$593,460
Driver`s License Fees	110	\$14.28	\$40,026
Vehicle Inspection Fees	100	\$14.13	\$39,602
Parking Fees & Tolls excluding Trips	111	\$99.03	\$277,477
Parking Fees excluding Residence (Not on Trips)	109	\$50.03	\$140,189
Tolls/Electronic Toll Passes excluding Trips	113	\$49.00	\$137,288
Towing Charges	118	\$6.56	\$18,387
Auto Service Clubs & GPS Services	112	\$30.28	\$84,844

Data Note: The Spending Potential Index (SPI) is household-based, and represents the amount spent for a product or service relative to a national average of 100.
Source: Esri forecasts for 2016 and 2021; Consumer Spending data are derived from the 2013 and 2014 Consumer Expenditure Surveys, Bureau of Labor Statistics.

Automotive Aftermarket Expenditures

Stonecrest, Tega Cay, SC
2451 Highway 160 W, Fort Mill, South Carolina, 29708
Drive Time: 10 minute radius

Prepared by YCED
Latitude: 35.04714
Longitude: -80.99151

Demographic Summary		2016	2021
Population		38,173	43,549
Households		13,805	15,655
Families		10,413	11,757
Median Age		37.7	37.7
Median Household Income		\$85,519	\$99,146

	Spending Potential Index	Average Amount Spent	Total
Transportation - Local			
Payments on Vehicles excluding Leases	137	\$2,849.08	\$39,331,499
Gasoline and Motor Oil			
Gasoline	129	\$3,888.76	\$53,684,342
Diesel Fuel	132	\$73.92	\$1,020,452
Motor Oil	120	\$18.85	\$260,189
Other Vehicle Expenses			
Vehicle Maintenance & Repairs	131	\$1,351.15	\$18,652,679
Vehicle Coolant/Brake/Transmission Fluids	118	\$9.37	\$129,406
Tire Purchase/Replacement	125	\$202.40	\$2,794,159
Vehicle Parts/Equipment/Accessories	122	\$80.21	\$1,107,244
Vehicle Accessories including Labor	142	\$16.58	\$228,938
Vehicle Cleaning Services including Car Washes	137	\$28.51	\$393,618
Miscellaneous Auto Repair/Service	140	\$172.58	\$2,382,520
Vehicle Body Work & Painting	124	\$43.26	\$597,211
Vehicle or Engine Repairs	132	\$288.54	\$3,983,352
Vehicle Motor Tune-up	142	\$92.50	\$1,277,004
Lube/Oil Change & Oil Filters	130	\$136.46	\$1,883,843
Vehicle Front End Alignment/Wheel Balance & Rotation	122	\$40.62	\$560,760
Vehicle Shock Absorber Replacement	135	\$21.32	\$294,334
Tire Repair and Other Repair Work	127	\$181.25	\$2,502,139
Auto Repair Service Policy	142	\$37.53	\$518,153
Vehicle Insurance	129	\$1,441.96	\$19,906,296
Rental of Vehicles excluding Trips	139	\$49.16	\$678,713
Leased Vehicles	127	\$383.03	\$5,287,680
Basic Lease Charge for Cars/Trucks	126	\$340.39	\$4,699,144
Car/Truck Lease Fees & Down Payments	137	\$42.63	\$588,536
Vehicle Pers Property Taxes/State & Local Registr Fees	134	\$220.81	\$3,048,312
Driver`s License Fees	117	\$15.11	\$208,568
Vehicle Inspection Fees	113	\$16.00	\$220,929
Parking Fees & Tolls excluding Trips	125	\$111.06	\$1,533,115
Parking Fees excluding Residence (Not on Trips)	122	\$55.87	\$771,350
Tolls/Electronic Toll Passes excluding Trips	128	\$55.18	\$761,765
Towing Charges	121	\$6.71	\$92,699
Auto Service Clubs & GPS Services	123	\$33.24	\$458,848

Data Note: The Spending Potential Index (SPI) is household-based, and represents the amount spent for a product or service relative to a national average of 100.
Source: Esri forecasts for 2016 and 2021; Consumer Spending data are derived from the 2013 and 2014 Consumer Expenditure Surveys, Bureau of Labor Statistics.

Automotive Aftermarket Expenditures

Stonecrest, Tega Cay, SC
2451 Highway 160 W, Fort Mill, South Carolina, 29708
Drive Time: 20 minute radius

Prepared by YCED
Latitude: 35.04714
Longitude: -80.99151

Demographic Summary		2016	2021
Population		234,313	262,253
Households		90,034	100,213
Families		58,498	64,927
Median Age		35.2	35.5
Median Household Income		\$56,508	\$63,773

	Spending Potential Index	Average Amount Spent	Total
Transportation - Local			
Payments on Vehicles excluding Leases	102	\$2,120.15	\$190,885,760
Gasoline and Motor Oil			
Gasoline	100	\$3,006.38	\$270,676,658
Diesel Fuel	90	\$50.20	\$4,519,837
Motor Oil	94	\$14.82	\$1,334,565
Other Vehicle Expenses			
Vehicle Maintenance & Repairs	98	\$1,012.86	\$91,191,566
Vehicle Coolant/Brake/Transmission Fluids	96	\$7.61	\$685,323
Tire Purchase/Replacement	94	\$152.01	\$13,686,319
Vehicle Parts/Equipment/Accessories	96	\$63.43	\$5,710,691
Vehicle Accessories including Labor	106	\$12.40	\$1,116,652
Vehicle Cleaning Services including Car Washes	103	\$21.40	\$1,926,585
Miscellaneous Auto Repair/Service	101	\$124.28	\$11,188,981
Vehicle Body Work & Painting	94	\$32.66	\$2,940,347
Vehicle or Engine Repairs	98	\$215.20	\$19,375,597
Vehicle Motor Tune-up	103	\$67.03	\$6,035,087
Lube/Oil Change & Oil Filters	99	\$104.35	\$9,394,827
Vehicle Front End Alignment/Wheel Balance & Rotation	93	\$31.15	\$2,804,311
Vehicle Shock Absorber Replacement	100	\$15.80	\$1,422,170
Tire Repair and Other Repair Work	96	\$137.90	\$12,415,697
Auto Repair Service Policy	104	\$27.64	\$2,488,980
Vehicle Insurance	99	\$1,105.76	\$99,555,942
Rental of Vehicles excluding Trips	106	\$37.50	\$3,376,577
Leased Vehicles	95	\$286.88	\$25,828,901
Basic Lease Charge for Cars/Trucks	94	\$254.42	\$22,906,564
Car/Truck Lease Fees & Down Payments	104	\$32.46	\$2,922,337
Vehicle Pers Property Taxes/State & Local Registr Fees	99	\$162.51	\$14,631,173
Driver`s License Fees	100	\$12.90	\$1,161,306
Vehicle Inspection Fees	87	\$12.39	\$1,115,088
Parking Fees & Tolls excluding Trips	94	\$83.42	\$7,511,083
Parking Fees excluding Residence (Not on Trips)	94	\$43.43	\$3,909,869
Tolls/Electronic Toll Passes excluding Trips	93	\$40.00	\$3,601,214
Towing Charges	105	\$5.83	\$525,021
Auto Service Clubs & GPS Services	90	\$24.28	\$2,185,977

Data Note: The Spending Potential Index (SPI) is household-based, and represents the amount spent for a product or service relative to a national average of 100.
Source: Esri forecasts for 2016 and 2021; Consumer Spending data are derived from the 2013 and 2014 Consumer Expenditure Surveys, Bureau of Labor Statistics.

Financial Expenditures

Stonecrest, Tega Cay, SC
2451 Highway 160 W, Fort Mill, South Carolina, 29708
Drive Time: 5 minute radius

Prepared by YCED
Latitude: 35.04714
Longitude: -80.99151

Demographic Summary		2016	2021
Population		7,197	8,117
Households		2,802	3,148
Families		2,014	2,252
Median Age		37.8	38.0
Median Household Income		\$76,799	\$93,858
		Spending Potential Index	Average Amount Spent
			Total
Assets			
Value of Checking/Savings/Money Market Accounts & CDs	116	\$4,536.65	\$12,711,707
Value of Checking/Savings/Money Market Accounts & CDs (1 year ago)	118	\$4,334.42	\$12,145,033
Value of Stocks/Bonds/Mutual Funds	123	\$9,251.08	\$25,921,535
Value of Stocks/Bonds/Mutual Funds (1 year ago)	117	\$7,841.82	\$21,972,777
Value of Other Financial Assets	115	\$1,303.22	\$3,651,630
Value of Other Financial Assets (1 year ago)	112	\$1,073.03	\$3,006,622
Value of Retirement Plans	123	\$32,115.43	\$89,987,429
Value of Retirement Plans (1 year ago)	121	\$29,791.61	\$83,476,095
Surrender Value of Whole Life Policies	131	\$1,212.42	\$3,397,199
Surrender Value of Whole Life Policies (1 year ago)"	129	\$1,034.71	\$2,899,253
Earnings			
Interest/Dividends	113	\$1,048.33	\$2,937,413
Royalty/Estate/Trust Income	130	\$496.86	\$1,392,202
Liabilities			
Original Mortgage Amount (Owned Home)	165	\$18,630.54	\$52,202,777
Vehicle Loan Amount (1)	134	\$3,258.34	\$9,129,874
Value of Credit Card Debt	122	\$696.78	\$1,952,384
Value of Credit Card Debt (1 year ago)	122	\$677.85	\$1,899,329
Value Owed on Student Loans	115	\$1,509.24	\$4,228,903
Value Owed on Student Loans (1 year ago)	118	\$1,418.66	\$3,975,075
Value Owed on Non-student Loans	100	\$220.34	\$617,385
Value Owed on Non-student Loans (1 year ago)	98	\$165.23	\$462,974
Amount Paid: Interest			
Home Mortgage	152	\$5,635.72	\$15,791,301
Lump Sum Home Equity Loan	132	\$75.09	\$210,416
New Car/Truck/Van Loan	139	\$168.63	\$472,511
Used Car/Truck/Van Loan	127	\$159.54	\$447,031
Finance/Late/Interest Charges for Credit Cards	128	\$101.48	\$284,358
Finance/Late/Interest Charges for Student Loans	138	\$46.80	\$131,129
Finance/Late/Interest Charges for Non-student Loans	122	\$14.74	\$41,303
Amount Paid: Principal			
Home Mortgage	146	\$2,833.50	\$7,939,457
Lump Sum Home Equity Loan	121	\$103.96	\$291,305
New Car/Truck/Van Loan	139	\$1,228.85	\$3,443,227
Used Car/Truck/Van Loan	127	\$911.09	\$2,552,879
Checking Account and Banking Service Charges	112	\$37.04	\$103,798

Data Note: The Spending Potential Index (SPI) is household-based, and represents the amount spent for a product or service relative to a national average of 100. Detail may not sum to totals due to rounding.

(1) **Vehicle Loan Amount** is the amount of a loan for a car, truck, van, boat, camper, motorcycle, motor scooter, moped, plane, snowmobile, dune buggy, ATV, or Segway, excluding interest.

Source: Esri forecasts for 2016 and 2021; Consumer Spending data are derived from the 2013 and 2014 Consumer Expenditure Surveys, Bureau of Labor Statistics.

Financial Expenditures

Stonecrest, Tega Cay, SC
2451 Highway 160 W, Fort Mill, South Carolina, 29708
Drive Time: 10 minute radius

Prepared by YCED
Latitude: 35.04714
Longitude: -80.99151

Demographic Summary		2016	2021
Population		38,173	43,549
Households		13,805	15,655
Families		10,413	11,757
Median Age		37.7	37.7
Median Household Income		\$85,519	\$99,146
		Spending Potential Index	Average Amount Spent
			Total
Assets			
Value of Checking/Savings/Money Market Accounts & CDs	129	\$5,006.03	\$69,108,216
Value of Checking/Savings/Money Market Accounts & CDs (1 year ago)	130	\$4,775.12	\$65,920,543
Value of Stocks/Bonds/Mutual Funds	136	\$10,228.20	\$141,200,340
Value of Stocks/Bonds/Mutual Funds (1 year ago)	131	\$8,747.83	\$120,763,753
Value of Other Financial Assets	124	\$1,400.80	\$19,338,083
Value of Other Financial Assets (1 year ago)	120	\$1,150.43	\$15,881,697
Value of Retirement Plans	136	\$35,609.19	\$491,584,927
Value of Retirement Plans (1 year ago)	134	\$32,984.65	\$455,353,106
Surrender Value of Whole Life Policies	140	\$1,298.42	\$17,924,708
Surrender Value of Whole Life Policies (1 year ago)"	139	\$1,115.16	\$15,394,789
Earnings			
Interest/Dividends	127	\$1,171.03	\$16,166,083
Royalty/Estate/Trust Income	139	\$530.04	\$7,317,210
Liabilities			
Original Mortgage Amount (Owned Home)	173	\$19,486.31	\$269,008,558
Vehicle Loan Amount (1)	137	\$3,343.89	\$46,162,394
Value of Credit Card Debt	131	\$746.39	\$10,303,966
Value of Credit Card Debt (1 year ago)	131	\$725.92	\$10,021,304
Value Owed on Student Loans	119	\$1,570.80	\$21,684,916
Value Owed on Student Loans (1 year ago)	123	\$1,478.77	\$20,414,355
Value Owed on Non-student Loans	102	\$224.71	\$3,102,161
Value Owed on Non-student Loans (1 year ago)	100	\$169.61	\$2,341,457
Amount Paid: Interest			
Home Mortgage	161	\$5,973.48	\$82,463,913
Lump Sum Home Equity Loan	144	\$82.19	\$1,134,638
New Car/Truck/Van Loan	144	\$173.98	\$2,401,834
Used Car/Truck/Van Loan	130	\$163.20	\$2,252,968
Finance/Late/Interest Charges for Credit Cards	137	\$108.71	\$1,500,806
Finance/Late/Interest Charges for Student Loans	143	\$48.55	\$670,226
Finance/Late/Interest Charges for Non-student Loans	127	\$15.36	\$212,019
Amount Paid: Principal			
Home Mortgage	155	\$3,026.14	\$41,775,851
Lump Sum Home Equity Loan	135	\$116.14	\$1,603,350
New Car/Truck/Van Loan	145	\$1,278.18	\$17,645,301
Used Car/Truck/Van Loan	130	\$931.75	\$12,862,815
Checking Account and Banking Service Charges	117	\$38.81	\$535,731

Data Note: The Spending Potential Index (SPI) is household-based, and represents the amount spent for a product or service relative to a national average of 100. Detail may not sum to totals due to rounding.

(1) **Vehicle Loan Amount** is the amount of a loan for a car, truck, van, boat, camper, motorcycle, motor scooter, moped, plane, snowmobile, dune buggy, ATV, or Segway, excluding interest.

Source: Esri forecasts for 2016 and 2021; Consumer Spending data are derived from the 2013 and 2014 Consumer Expenditure Surveys, Bureau of Labor Statistics.

Financial Expenditures

Stonecrest, Tega Cay, SC
 2451 Highway 160 W, Fort Mill, South Carolina, 29708
 Drive Time: 20 minute radius

Prepared by YCED
 Latitude: 35.04714
 Longitude: -80.99151

Demographic Summary		2016	2021
Population		234,313	262,253
Households		90,034	100,213
Families		58,498	64,927
Median Age		35.2	35.5
Median Household Income		\$56,508	\$63,773
	Spending Potential Index	Average Amount Spent	Total
Assets			
Value of Checking/Savings/Money Market Accounts & CDs	89	\$3,469.50	\$312,373,120
Value of Checking/Savings/Money Market Accounts & CDs (1 year ago)	90	\$3,284.83	\$295,746,441
Value of Stocks/Bonds/Mutual Funds	93	\$6,944.14	\$625,208,834
Value of Stocks/Bonds/Mutual Funds (1 year ago)	91	\$6,097.11	\$548,947,268
Value of Other Financial Assets	98	\$1,108.48	\$99,800,724
Value of Other Financial Assets (1 year ago)	95	\$913.27	\$82,225,638
Value of Retirement Plans	87	\$22,768.56	\$2,049,944,598
Value of Retirement Plans (1 year ago)	87	\$21,280.04	\$1,915,927,024
Surrender Value of Whole Life Policies	96	\$886.00	\$79,770,270
Surrender Value of Whole Life Policies (1 year ago)"	95	\$761.80	\$68,587,778
Earnings			
Interest/Dividends	87	\$801.36	\$72,149,772
Royalty/Estate/Trust Income	95	\$362.42	\$32,630,121
Liabilities			
Original Mortgage Amount (Owned Home)	106	\$11,975.87	\$1,078,235,329
Vehicle Loan Amount (1)	105	\$2,553.05	\$229,861,493
Value of Credit Card Debt	95	\$543.45	\$48,929,144
Value of Credit Card Debt (1 year ago)	95	\$526.50	\$47,402,585
Value Owed on Student Loans	107	\$1,407.91	\$126,759,496
Value Owed on Student Loans (1 year ago)	108	\$1,296.89	\$116,764,519
Value Owed on Non-student Loans	87	\$189.98	\$17,104,472
Value Owed on Non-student Loans (1 year ago)	85	\$143.19	\$12,892,315
Amount Paid: Interest			
Home Mortgage	101	\$3,746.97	\$337,354,850
Lump Sum Home Equity Loan	91	\$52.12	\$4,692,897
New Car/Truck/Van Loan	103	\$124.60	\$11,218,357
Used Car/Truck/Van Loan	104	\$130.39	\$11,739,214
Finance/Late/Interest Charges for Credit Cards	99	\$79.14	\$7,125,213
Finance/Late/Interest Charges for Student Loans	116	\$39.25	\$3,533,633
Finance/Late/Interest Charges for Non-student Loans	98	\$11.84	\$1,066,119
Amount Paid: Principal			
Home Mortgage	98	\$1,903.96	\$171,421,093
Lump Sum Home Equity Loan	86	\$74.14	\$6,674,702
New Car/Truck/Van Loan	101	\$894.06	\$80,496,216
Used Car/Truck/Van Loan	103	\$738.19	\$66,461,886
Checking Account and Banking Service Charges	100	\$33.12	\$2,981,631

Data Note: The Spending Potential Index (SPI) is household-based, and represents the amount spent for a product or service relative to a national average of 100. Detail may not sum to totals due to rounding.

(1) **Vehicle Loan Amount** is the amount of a loan for a car, truck, van, boat, camper, motorcycle, motor scooter, moped, plane, snowmobile, dune buggy, ATV, or Segway, excluding interest.

Source: Esri forecasts for 2016 and 2021; Consumer Spending data are derived from the 2013 and 2014 Consumer Expenditure Surveys, Bureau of Labor Statistics.

House and Home Expenditures

Stonecrest, Tega Cay, SC
2451 Highway 160 W, Fort Mill, South Carolina, 29708
Drive Time: 5 minute radius

Prepared by YCED
Latitude: 35.04714
Longitude: -80.99151

2016 Housing Summary		2016 Demographic Summary	
Housing Units	2,979	Population	7,197
2016-2021 Percent Change	12.19%	Households	2,802
Percent Occupied	94.1%	Families	2,014
Percent Owner Households	75.3%	Median Age	37.8
Median Home Value	\$265,615	Median Household Income	\$76,799
		Spending Potential Index	Average Amount Spent
			Total
Owned Dwellings		139	\$41,988,997
Mortgage Interest		152	\$15,791,301
Mortgage Principal		146	\$7,939,457
Property Taxes		121	\$8,068,510
Homeowners Insurance		131	\$1,629,485
Ground Rent		135	\$326,167
Maintenance and Remodeling Services		133	\$6,536,592
Maintenance and Remodeling Materials		137	\$1,392,079
Property Management and Security		111	\$305,406
Rented Dwellings		86	\$10,353,557
Rent		85	\$10,154,391
Renters' Insurance		90	\$51,354
Maintenance and Repair Services		113	\$104,808
Maintenance and Repair Materials		104	\$43,004
Other Lodging		129	\$1,745,029
Owned Vacation Homes		130	\$1,493,685
Mortgage Payment		157	\$702,630
Property Taxes		119	\$449,435
Homeowners Insurance		120	\$51,049
Maintenance and Remodeling		100	\$191,249
Property Management and Security		115	\$99,322
Housing While Attending School		122	\$251,344
Household Operations		131	\$6,296,045
Child Care		149	\$1,771,820
Care for Elderly or Handicapped		103	\$128,100
Appliance Rental and Repair		121	\$61,510
Computer Information Services		120	\$1,516,772
Home Security System Services		153	\$154,518
Non-Apparel Household Laundry/Dry Cleaning		118	\$87,052
Housekeeping Services		133	\$613,771
Lawn and Garden		126	\$1,439,248
Moving/Storage/Freight Express		119	\$210,834
Installation of Computers		138	\$1,522
PC Repair (Personal Use)		117	\$20,959
Reupholstering/Furniture Repair		132	\$31,367
Termite/Pest Control		162	\$130,814
Water Softening Services		131	\$28,037
Internet Services Away from Home		123	\$14,573
Other Home Services (1)		123	\$85,147

Data Note: The Spending Potential Index (SPI) is household-based, and represents the amount spent for a product or service relative to a national average of 100. Detail may not sum to totals due to rounding.

Source: Esri forecasts for 2016 and 2021; Consumer Spending data are derived from the 2013 and 2014 Consumer Expenditure Surveys, Bureau of Labor Statistics.

House and Home Expenditures

Stonecrest, Tega Cay, SC
2451 Highway 160 W, Fort Mill, South Carolina, 29708
Drive Time: 5 minute radius

Prepared by YCED
Latitude: 35.04714
Longitude: -80.99151

	Spending Potential Index	Average Amount Spent	Total
Utilities, Fuels, Public Services	121	\$5,896.75	\$16,522,681
Bottled Gas	91	\$62.08	\$173,959
Electricity	123	\$2,287.16	\$6,408,616
Fuel Oil	41	\$44.08	\$123,513
Natural Gas	114	\$604.46	\$1,693,684
Phone Services	122	\$1,996.06	\$5,592,964
Water and Other Public Services	135	\$894.94	\$2,507,619
Coal/Wood/Other Fuel	73	\$7.97	\$22,326
Housekeeping Supplies	124	\$868.86	\$2,434,554
Laundry and Cleaning Supplies	122	\$232.96	\$652,766
Postage and Stationery	121	\$207.54	\$581,531
Other HH Products (2)	126	\$428.36	\$1,200,257
Household Textiles	125	\$108.60	\$304,297
Bathroom Linens	123	\$15.76	\$44,168
Bedroom Linens	123	\$56.56	\$158,492
Kitchen, Dining Room and other Linens	139	\$10.62	\$29,749
Curtains and Draperies	122	\$19.30	\$54,092
Slipcovers, Decorative Pillows	133	\$6.35	\$17,796
Furniture	130	\$640.11	\$1,793,578
Mattresses and Box Springs	129	\$112.05	\$313,965
Other Bedroom Furniture	133	\$113.40	\$317,744
Sofas	126	\$168.01	\$470,767
Living Room Chairs	130	\$57.05	\$159,847
Living Room Tables	132	\$19.34	\$54,181
Kitchen, Dining Room Furniture	133	\$54.20	\$151,861
Infant Furniture	136	\$15.64	\$43,821
Outdoor Furniture	133	\$38.31	\$107,348
Wall Units, Cabinets, Other Furniture (3)	134	\$62.11	\$174,043
Major Appliances	132	\$374.73	\$1,049,987
Dishwashers and Disposals	135	\$33.74	\$94,541
Refrigerators and Freezers	138	\$110.46	\$309,507
Clothes Washers & Dryers	132	\$97.95	\$274,452
Cooking Stoves and Ovens	136	\$54.85	\$153,699
Microwave Ovens	113	\$19.46	\$54,516
Window Air Conditioners	107	\$7.99	\$22,397
Electric Floor Cleaning Equipment	130	\$27.73	\$77,712
Sewing Machines and Miscellaneous Appliances	126	\$22.54	\$63,162

Data Note: The Spending Potential Index (SPI) is household-based, and represents the amount spent for a product or service relative to a national average of 100. Detail may not sum to totals due to rounding.

Source: Esri forecasts for 2016 and 2021; Consumer Spending data are derived from the 2013 and 2014 Consumer Expenditure Surveys, Bureau of Labor Statistics.

House and Home Expenditures

Stonecrest, Tega Cay, SC
2451 Highway 160 W, Fort Mill, South Carolina, 29708
Drive Time: 5 minute radius

Prepared by YCED
Latitude: 35.04714
Longitude: -80.99151

	Spending Potential Index	Average Amount Spent	Total
Other Household Furnishings and Equipment			
Rugs	122	\$29.73	\$83,304
Housewares	127	\$106.52	\$298,456
Small Appliances	119	\$56.13	\$157,263
Sewing/Needlework/Quilt Materials/Items	115	\$13.60	\$38,110
Window Coverings	150	\$30.10	\$84,354
Lamps/Lighting Fixtures/Ceiling Fans	139	\$54.21	\$151,898
Infant Equipment	141	\$25.69	\$71,983
Rental of Furniture	97	\$4.19	\$11,745
Laundry and Cleaning Equipment	129	\$31.90	\$89,397
Closet and Storage Items	133	\$23.01	\$64,488
Luggage	133	\$12.27	\$34,368
Clocks and Other Household Decoratives	130	\$175.14	\$490,754
Telephones and Accessories	125	\$88.86	\$248,996
Grills and Outdoor Equipment	106	\$36.84	\$103,232
Power Tools	132	\$59.95	\$167,976
Hand Tools	125	\$9.73	\$27,273
Office Furniture/Equipment for Home Use	127	\$18.65	\$52,260
Computers and Hardware for Home Use	128	\$221.71	\$621,237
Portable Memory	131	\$6.17	\$17,295
Computer Software	123	\$15.91	\$44,591
Computer Accessories	125	\$22.30	\$62,489
Other Household Appliances	124	\$14.09	\$39,483
Misc Equipment incl Ladders/Sheds/Etc	130	\$97.86	\$274,206

(1) Other Home Services include miscellaneous home services and small repair jobs not already specified.

(2) Other HH Products includes paper towels, napkins, toilet tissue, facial tissue, and miscellaneous household products, such as paper, plastic and foil products.

(3) Wall Units Cabinets and Other Furniture includes modular wall units, shelves or cabinets, and other living room, family or recreation room furniture including desks.

Data Note: The Spending Potential Index (SPI) is household-based, and represents the amount spent for a product or service relative to a national average of 100. Detail may not sum to totals due to rounding.

Source: Esri forecasts for 2016 and 2021; Consumer Spending data are derived from the 2013 and 2014 Consumer Expenditure Surveys, Bureau of Labor Statistics.

House and Home Expenditures

Stonecrest, Tega Cay, SC
2451 Highway 160 W, Fort Mill, South Carolina, 29708
Drive Time: 10 minute radius

Prepared by YCED
Latitude: 35.04714
Longitude: -80.99151

2016 Housing Summary		2016 Demographic Summary		
Housing Units	14,820	Population	38,173	
2016-2021 Percent Change	13.00%	Households	13,805	
Percent Occupied	93.2%	Families	10,413	
Percent Owner Households	79.4%	Median Age	37.7	
Median Home Value	\$251,173	Median Household Income	\$85,519	
		Spending Potential Index	Average Amount Spent	Total
Owned Dwellings		149	\$16,111.56	\$222,420,120
Mortgage Interest		161	\$5,973.48	\$82,463,913
Mortgage Principal		155	\$3,026.14	\$41,775,851
Property Taxes		135	\$3,219.56	\$44,446,053
Homeowners Insurance		138	\$610.90	\$8,433,447
Ground Rent		137	\$118.16	\$1,631,249
Maintenance and Remodeling Services		144	\$2,519.53	\$34,782,171
Maintenance and Remodeling Materials		144	\$523.28	\$7,223,827
Property Management and Security		123	\$120.51	\$1,663,607
Rented Dwellings		86	\$3,700.61	\$51,086,926
Rent		86	\$3,627.15	\$50,072,785
Renters' Insurance		91	\$18.55	\$256,117
Maintenance and Repair Services		117	\$38.97	\$537,950
Maintenance and Repair Materials		108	\$15.94	\$220,074
Other Lodging		142	\$685.51	\$9,463,409
Owned Vacation Homes		144	\$587.71	\$8,113,293
Mortgage Payment		168	\$268.95	\$3,712,830
Property Taxes		132	\$178.03	\$2,457,685
Homeowners Insurance		133	\$20.14	\$278,026
Maintenance and Remodeling		119	\$80.99	\$1,118,077
Property Management and Security		129	\$39.60	\$546,675
Housing While Attending School		133	\$97.80	\$1,350,116
Household Operations		139	\$2,382.70	\$32,893,239
Child Care		157	\$664.37	\$9,171,594
Care for Elderly or Handicapped		114	\$50.48	\$696,861
Appliance Rental and Repair		130	24	324,758
Computer Information Services		126	\$567.60	\$7,835,736
Home Security System Services		159	\$57.32	\$791,360
Non-Apparel Household Laundry/Dry Cleaning		128	\$33.57	\$463,373
Housekeeping Services		145	\$239.84	\$3,310,923
Lawn and Garden		135	\$549.49	\$7,585,725
Moving/Storage/Freight Express		124	\$78.83	\$1,088,225
Installation of Computers		149	\$0.58	\$8,064
PC Repair (Personal Use)		124	\$7.95	\$109,774
Reupholstering/Furniture Repair		148	\$12.53	\$172,972
Termite/Pest Control		165	\$47.52	\$655,985
Water Softening Services		133	\$10.17	\$140,438
Internet Services Away from Home		126	\$5.34	\$73,664
Other Home Services (1)		136	\$33.60	\$463,787

Data Note: The Spending Potential Index (SPI) is household-based, and represents the amount spent for a product or service relative to a national average of 100. Detail may not sum to totals due to rounding.

Source: Esri forecasts for 2016 and 2021; Consumer Spending data are derived from the 2013 and 2014 Consumer Expenditure Surveys, Bureau of Labor Statistics.

House and Home Expenditures

Stonecrest, Tega Cay, SC
2451 Highway 160 W, Fort Mill, South Carolina, 29708
Drive Time: 10 minute radius

Prepared by YCED
Latitude: 35.04714
Longitude: -80.99151

	Spending Potential Index	Average Amount Spent	Total
Utilities, Fuels, Public Services	126	\$6,163.08	\$85,081,312
Bottled Gas	96	\$65.30	\$901,488
Electricity	126	\$2,344.12	\$32,360,508
Fuel Oil	65	\$70.81	\$977,568
Natural Gas	125	\$661.46	\$9,131,390
Phone Services	127	\$2,079.12	\$28,702,189
Water and Other Public Services	141	\$933.33	\$12,884,589
Coal/Wood/Other Fuel	82	\$8.95	\$123,580
Housekeeping Supplies	129	\$909.53	\$12,556,003
Laundry and Cleaning Supplies	126	\$241.63	\$3,335,757
Postage and Stationery	129	\$221.33	\$3,055,496
Other HH Products (2)	131	\$446.56	\$6,164,749
Household Textiles	133	\$115.46	\$1,593,922
Bathroom Linens	129	\$16.64	\$229,656
Bedroom Linens	131	\$60.00	\$828,314
Kitchen, Dining Room and other Linens	148	\$11.24	\$155,192
Curtains and Draperies	132	\$20.90	\$288,514
Slipcovers, Decorative Pillows	140	\$6.68	\$92,245
Furniture	137	\$673.59	\$9,298,855
Mattresses and Box Springs	135	\$117.93	\$1,628,059
Other Bedroom Furniture	137	\$116.50	\$1,608,274
Sofas	132	\$177.02	\$2,443,816
Living Room Chairs	136	\$59.58	\$822,527
Living Room Tables	139	\$20.34	\$280,828
Kitchen, Dining Room Furniture	142	\$57.87	\$798,876
Infant Furniture	141	\$16.21	\$223,781
Outdoor Furniture	145	\$41.74	\$576,232
Wall Units, Cabinets, Other Furniture (3)	143	\$66.39	\$916,462
Major Appliances	139	\$394.99	\$5,452,874
Dishwashers and Disposals	146	\$36.35	\$501,876
Refrigerators and Freezers	144	\$115.26	\$1,591,149
Clothes Washers & Dryers	139	\$102.96	\$1,421,331
Cooking Stoves and Ovens	144	\$58.12	\$802,321
Microwave Ovens	119	\$20.48	\$282,719
Window Air Conditioners	114	\$8.49	\$117,211
Electric Floor Cleaning Equipment	138	\$29.34	\$405,100
Sewing Machines and Miscellaneous Appliances	134	\$23.99	\$331,166

Data Note: The Spending Potential Index (SPI) is household-based, and represents the amount spent for a product or service relative to a national average of 100. Detail may not sum to totals due to rounding.

Source: Esri forecasts for 2016 and 2021; Consumer Spending data are derived from the 2013 and 2014 Consumer Expenditure Surveys, Bureau of Labor Statistics.

House and Home Expenditures

Stonecrest, Tega Cay, SC
2451 Highway 160 W, Fort Mill, South Carolina, 29708
Drive Time: 10 minute radius

Prepared by YCED
Latitude: 35.04714
Longitude: -80.99151

	Spending Potential Index	Average Amount Spent	Total
Other Household Furnishings and Equipment			
Rugs	135	\$32.87	\$453,784
Housewares	133	\$111.63	\$1,541,002
Small Appliances	127	\$59.62	\$823,041
Sewing/Needlework/Quilt Materials/Items	124	\$14.71	\$203,118
Window Coverings	161	\$32.19	\$444,441
Lamps/Lighting Fixtures/Ceiling Fans	143	\$55.78	\$770,073
Infant Equipment	144	\$26.10	\$360,357
Rental of Furniture	95	\$4.08	\$56,316
Laundry and Cleaning Equipment	135	\$33.32	\$459,977
Closet and Storage Items	142	\$24.41	\$336,922
Luggage	143	\$13.25	\$182,937
Clocks and Other Household Decoratives	138	\$186.20	\$2,570,472
Telephones and Accessories	131	\$92.91	\$1,282,667
Grills and Outdoor Equipment	116	\$40.27	\$555,907
Power Tools	138	\$62.85	\$867,602
Hand Tools	132	\$10.26	\$141,610
Office Furniture/Equipment for Home Use	135	\$19.81	\$273,449
Computers and Hardware for Home Use	135	\$234.49	\$3,237,126
Portable Memory	138	\$6.48	\$89,456
Computer Software	131	\$16.92	\$233,634
Computer Accessories	134	\$23.76	\$328,068
Other Household Appliances	133	\$15.06	\$207,908
Misc Equipment incl Ladders/Sheds/Etc	139	\$104.44	\$1,441,844

(1) Other Home Services include miscellaneous home services and small repair jobs not already specified.

(2) Other HH Products includes paper towels, napkins, toilet tissue, facial tissue, and miscellaneous household products, such as paper, plastic and foil products.

(3) Wall Units Cabinets and Other Furniture includes modular wall units, shelves or cabinets, and other living room, family or recreation room furniture including desks.

Data Note: The Spending Potential Index (SPI) is household-based, and represents the amount spent for a product or service relative to a national average of 100. Detail may not sum to totals due to rounding.

Source: Esri forecasts for 2016 and 2021; Consumer Spending data are derived from the 2013 and 2014 Consumer Expenditure Surveys, Bureau of Labor Statistics.

House and Home Expenditures

Stonecrest, Tega Cay, SC
2451 Highway 160 W, Fort Mill, South Carolina, 29708
Drive Time: 20 minute radius

Prepared by YCED
Latitude: 35.04714
Longitude: -80.99151

2016 Housing Summary		2016 Demographic Summary	
Housing Units	98,144	Population	234,313
2016-2021 Percent Change	10.91%	Households	90,034
Percent Occupied	91.7%	Families	58,498
Percent Owner Households	60.3%	Median Age	35.2
Median Home Value	\$193,881	Median Household Income	\$56,508
	Spending Potential Index	Average Amount Spent	Total
Owned Dwellings	95	\$10,234.97	\$921,495,199
Mortgage Interest	101	\$3,746.97	\$337,354,850
Mortgage Principal	98	\$1,903.96	\$171,421,093
Property Taxes	87	\$2,085.03	\$187,723,300
Homeowners Insurance	90	\$400.07	\$36,019,481
Ground Rent	96	\$82.53	\$7,430,455
Maintenance and Remodeling Services	91	\$1,592.83	\$143,409,160
Maintenance and Remodeling Materials	92	\$332.74	\$29,957,481
Property Management and Security	93	\$90.85	\$8,179,378
Rented Dwellings	116	\$4,981.91	\$448,541,122
Rent	116	\$4,911.78	\$442,227,149
Renters' Insurance	109	\$22.13	\$1,992,088
Maintenance and Repair Services	99	\$32.98	\$2,969,500
Maintenance and Repair Materials	102	\$15.02	\$1,352,385
Other Lodging	91	\$441.03	\$39,707,861
Owned Vacation Homes	91	\$373.92	\$33,665,102
Mortgage Payment	102	\$162.67	\$14,645,381
Property Taxes	87	\$117.44	\$10,573,387
Homeowners Insurance	85	\$12.94	\$1,164,692
Maintenance and Remodeling	81	\$55.32	\$4,980,312
Property Management and Security	83	\$25.56	\$2,301,330
Housing While Attending School	91	\$67.12	\$6,042,759
Household Operations	98	\$1,686.99	\$151,886,460
Child Care	108	\$458.39	\$41,271,098
Care for Elderly or Handicapped	85	\$37.98	\$3,419,734
Appliance Rental and Repair	92	17	1,493,712
Computer Information Services	99	\$446.68	\$40,216,767
Home Security System Services	104	\$37.23	\$3,351,655
Non-Apparel Household Laundry/Dry Cleaning	98	\$25.85	\$2,327,047
Housekeeping Services	92	\$152.49	\$13,729,251
Lawn and Garden	90	\$367.07	\$33,048,992
Moving/Storage/Freight Express	103	\$65.64	\$5,909,701
Installation of Computers	105	\$0.41	\$36,599
PC Repair (Personal Use)	97	\$6.18	\$556,301
Reupholstering/Furniture Repair	91	\$7.70	\$693,558
Termite/Pest Control	106	\$30.61	\$2,756,189
Water Softening Services	96	\$7.29	\$656,278
Internet Services Away from Home	110	\$4.65	\$419,089
Other Home Services (1)	90	\$22.22	\$2,000,490

Data Note: The Spending Potential Index (SPI) is household-based, and represents the amount spent for a product or service relative to a national average of 100. Detail may not sum to totals due to rounding.

Source: Esri forecasts for 2016 and 2021; Consumer Spending data are derived from the 2013 and 2014 Consumer Expenditure Surveys, Bureau of Labor Statistics.

House and Home Expenditures

Stonecrest, Tega Cay, SC
2451 Highway 160 W, Fort Mill, South Carolina, 29708
Drive Time: 20 minute radius

Prepared by YCED
Latitude: 35.04714
Longitude: -80.99151

	Spending Potential Index	Average Amount Spent	Total
Utilities, Fuels, Public Services	97	\$4,715.00	\$424,510,399
Bottled Gas	67	\$45.41	\$4,088,457
Electricity	98	\$1,823.48	\$164,175,615
Fuel Oil	50	\$54.50	\$4,906,877
Natural Gas	91	\$485.89	\$43,746,917
Phone Services	99	\$1,625.95	\$146,391,087
Water and Other Public Services	101	\$673.03	\$60,595,818
Coal/Wood/Other Fuel	62	\$6.73	\$605,628
Housekeeping Supplies	98	\$688.61	\$61,998,405
Laundry and Cleaning Supplies	99	\$189.66	\$17,076,294
Postage and Stationery	96	\$164.37	\$14,798,532
Other HH Products (2)	98	\$334.58	\$30,123,579
Household Textiles	98	\$85.19	\$7,670,026
Bathroom Linens	101	\$12.99	\$1,169,338
Bedroom Linens	99	\$45.53	\$4,099,240
Kitchen, Dining Room and other Linens	101	\$7.69	\$692,682
Curtains and Draperies	89	\$14.04	\$1,263,873
Slipcovers, Decorative Pillows	104	\$4.94	\$444,892
Furniture	102	\$502.80	\$45,268,796
Mattresses and Box Springs	102	\$88.98	\$8,010,884
Other Bedroom Furniture	109	\$92.55	\$8,332,722
Sofas	101	\$134.50	\$12,109,187
Living Room Chairs	100	\$43.78	\$3,941,910
Living Room Tables	106	\$15.51	\$1,396,136
Kitchen, Dining Room Furniture	103	\$41.98	\$3,779,247
Infant Furniture	110	\$12.64	\$1,137,668
Outdoor Furniture	93	\$26.74	\$2,407,339
Wall Units, Cabinets, Other Furniture (3)	100	\$46.13	\$4,153,704
Major Appliances	96	\$271.88	\$24,478,377
Dishwashers and Disposals	94	\$23.41	\$2,107,761
Refrigerators and Freezers	98	\$78.18	\$7,038,408
Clothes Washers & Dryers	98	\$72.81	\$6,555,499
Cooking Stoves and Ovens	94	\$38.11	\$3,431,597
Microwave Ovens	91	\$15.65	\$1,408,970
Window Air Conditioners	86	\$6.46	\$581,467
Electric Floor Cleaning Equipment	101	\$21.52	\$1,937,091
Sewing Machines and Miscellaneous Appliances	88	\$15.74	\$1,417,584

Data Note: The Spending Potential Index (SPI) is household-based, and represents the amount spent for a product or service relative to a national average of 100. Detail may not sum to totals due to rounding.

Source: Esri forecasts for 2016 and 2021; Consumer Spending data are derived from the 2013 and 2014 Consumer Expenditure Surveys, Bureau of Labor Statistics.

House and Home Expenditures

Stonecrest, Tega Cay, SC
2451 Highway 160 W, Fort Mill, South Carolina, 29708
Drive Time: 20 minute radius

Prepared by YCED
Latitude: 35.04714
Longitude: -80.99151

	Spending Potential Index	Average Amount Spent	Total
Other Household Furnishings and Equipment			
Rugs	93	\$22.79	\$2,051,548
Housewares	101	\$84.24	\$7,584,506
Small Appliances	97	\$45.85	\$4,128,449
Sewing/Needlework/Quilt Materials/Items	88	\$10.42	\$937,755
Window Coverings	103	\$20.63	\$1,857,054
Lamps/Lighting Fixtures/Ceiling Fans	96	\$37.33	\$3,360,583
Infant Equipment	110	\$19.95	\$1,796,535
Rental of Furniture	105	\$4.54	\$409,190
Laundry and Cleaning Equipment	98	\$24.28	\$2,186,045
Closet and Storage Items	100	\$17.18	\$1,546,367
Luggage	101	\$9.31	\$838,138
Clocks and Other Household Decoratives	98	\$131.74	\$11,861,401
Telephones and Accessories	102	\$72.76	\$6,550,743
Grills and Outdoor Equipment	84	\$29.06	\$2,616,158
Power Tools	97	\$44.26	\$3,984,845
Hand Tools	102	\$7.97	\$717,301
Office Furniture/Equipment for Home Use	101	\$14.73	\$1,325,816
Computers and Hardware for Home Use	103	\$178.84	\$16,101,510
Portable Memory	104	\$4.88	\$439,532
Computer Software	103	\$13.39	\$1,205,299
Computer Accessories	98	\$17.47	\$1,572,527
Other Household Appliances	96	\$10.92	\$983,017
Misc Equipment incl Ladders/Sheds/Etc	97	\$73.36	\$6,605,223

(1) Other Home Services include miscellaneous home services and small repair jobs not already specified.

(2) Other HH Products includes paper towels, napkins, toilet tissue, facial tissue, and miscellaneous household products, such as paper, plastic and foil products.

(3) Wall Units Cabinets and Other Furniture includes modular wall units, shelves or cabinets, and other living room, family or recreation room furniture including desks.

Data Note: The Spending Potential Index (SPI) is household-based, and represents the amount spent for a product or service relative to a national average of 100. Detail may not sum to totals due to rounding.

Source: Esri forecasts for 2016 and 2021; Consumer Spending data are derived from the 2013 and 2014 Consumer Expenditure Surveys, Bureau of Labor Statistics.

Household Budget Expenditures

Stonecrest, Tega Cay, SC
2451 Highway 160 W, Fort Mill, South Carolina, 29708
Drive Time: 5 minute radius

Prepared by YCED
Latitude: 35.04714
Longitude: -80.99151

Demographic Summary		2016	2021		
Population		7,197	8,117		
Households		2,802	3,148		
Families		2,014	2,252		
Median Age		37.8	38.0		
Median Household Income		\$76,799	\$93,858		
		Spending Potential Index	Average Amount Spent	Total	Percent
Total Expenditures		125	\$83,017.79	\$232,615,853	100.0%
Food		124	\$9,988.48	\$27,987,728	12.0%
Food at Home		121	\$6,036.67	\$16,914,760	7.3%
Food Away from Home		128	\$3,951.81	\$11,072,967	4.8%
Alcoholic Beverages		121	\$619.60	\$1,736,111	0.7%
Housing		123	\$25,199.95	\$70,610,264	30.4%
Shelter		124	\$19,303.21	\$54,087,583	23.3%
Utilities, Fuel and Public Services		121	\$5,896.75	\$16,522,681	7.1%
Household Operations		131	\$2,246.98	\$6,296,045	2.7%
Housekeeping Supplies		124	\$868.86	\$2,434,554	1.0%
Household Furnishings and Equipment		129	\$2,278.02	\$6,383,018	2.7%
Apparel and Services		126	\$2,529.63	\$7,088,035	3.0%
Transportation		125	\$10,129.64	\$28,383,254	12.2%
Travel		130	\$2,427.70	\$6,802,428	2.9%
Health Care		123	\$6,497.06	\$18,204,765	7.8%
Entertainment and Recreation		127	\$3,709.72	\$10,394,643	4.5%
Personal Care Products & Services		126	\$921.00	\$2,580,652	1.1%
Education		117	\$1,660.05	\$4,651,467	2.0%
Smoking Products		104	\$425.29	\$1,191,672	0.5%
Lotteries & Pari-mutuel Losses		110	\$69.37	\$194,367	0.1%
Legal Fees		127	\$199.26	\$558,317	0.2%
Funeral Expenses		103	\$88.99	\$249,351	0.1%
Safe Deposit Box Rentals		112	\$4.40	\$12,324	0.0%
Checking Account/Banking Service Charges		112	\$37.04	\$103,798	0.0%
Cemetery Lots/Vaults/Maintenance Fees		117	\$12.17	\$34,106	0.0%
Accounting Fees		118	\$106.31	\$297,880	0.1%
Miscellaneous Personal Services/Advertising/Fine		146	\$87.95	\$246,426	0.1%
Occupational Expenses		123	\$82.97	\$232,491	0.1%
Expenses for Other Properties		174	\$239.29	\$670,492	0.3%
Credit Card Membership Fees		116	\$4.45	\$12,479	0.0%
Shopping Club Membership Fees		134	\$22.32	\$62,554	0.0%
Support Payments/Cash Contributions/Gifts in Kind		126	\$2,926.82	\$8,200,962	3.5%
Life/Other Insurance		125	\$516.42	\$1,446,999	0.6%
Pensions and Social Security		134	\$9,118.01	\$25,548,671	11.0%

Data Note: The Spending Potential Index (SPI) is household-based, and represents the amount spent for a product or service relative to a national average of 100. Detail may not sum to totals due to rounding.

Source: Esri forecasts for 2016 and 2021; Consumer Spending data are derived from the 2013 and 2014 Consumer Expenditure Surveys, Bureau of Labor Statistics.

Household Budget Expenditures

Stonecrest, Tega Cay, SC
 2451 Highway 160 W, Fort Mill, South Carolina, 29708
 Drive Time: 10 minute radius

Prepared by YCED
 Latitude: 35.04714
 Longitude: -80.99151

Demographic Summary		2016	2021
Population		38,173	43,549
Households		13,805	15,655
Families		10,413	11,757
Median Age		37.7	37.7
Median Household Income		\$85,519	\$99,146

	Spending Potential Index	Average Amount Spent	Total	Percent
Total Expenditures	132	\$87,656.78	\$1,210,101,877	100.0%
Food	129	\$10,448.86	\$144,246,498	11.9%
Food at Home	127	\$6,311.08	\$87,124,480	7.2%
Food Away from Home	134	\$4,137.78	\$57,122,017	4.7%
Alcoholic Beverages	129	\$660.59	\$9,119,395	0.8%
Housing	130	\$26,660.76	\$368,051,767	30.4%
Shelter	132	\$20,497.68	\$282,970,455	23.4%
Utilities, Fuel and Public Services	126	\$6,163.08	\$85,081,312	7.0%
Household Operations	139	\$2,382.70	\$32,893,239	2.7%
Housekeeping Supplies	129	\$909.53	\$12,556,003	1.0%
Household Furnishings and Equipment	136	\$2,405.46	\$33,207,363	2.7%
Apparel and Services	132	\$2,665.75	\$36,800,618	3.0%
Transportation	131	\$10,563.03	\$145,822,598	12.1%
Travel	141	\$2,617.47	\$36,134,204	3.0%
Health Care	129	\$6,846.97	\$94,522,385	7.8%
Entertainment and Recreation	134	\$3,911.41	\$53,997,014	4.5%
Personal Care Products & Services	133	\$972.99	\$13,432,190	1.1%
Education	130	\$1,833.25	\$25,307,995	2.1%
Smoking Products	106	\$433.51	\$5,984,634	0.5%
Lotteries & Pari-mutuel Losses	118	\$74.16	\$1,023,740	0.1%
Legal Fees	133	\$207.54	\$2,865,140	0.2%
Funeral Expenses	107	\$92.16	\$1,272,226	0.1%
Safe Deposit Box Rentals	120	\$4.71	\$65,078	0.0%
Checking Account/Banking Service Charges	117	\$38.81	\$535,731	0.0%
Cemetery Lots/Vaults/Maintenance Fees	125	\$13.04	\$179,989	0.0%
Accounting Fees	129	\$116.29	\$1,605,404	0.1%
Miscellaneous Personal Services/Advertising/Fine	151	\$90.70	\$1,252,112	0.1%
Occupational Expenses	135	\$90.93	\$1,255,273	0.1%
Expenses for Other Properties	180	\$247.58	\$3,417,820	0.3%
Credit Card Membership Fees	127	\$4.88	\$67,362	0.0%
Shopping Club Membership Fees	143	\$23.83	\$329,030	0.0%
Support Payments/Cash Contributions/Gifts in Kind	134	\$3,099.94	\$42,794,740	3.5%
Life/Other Insurance	134	\$555.79	\$7,672,647	0.6%
Pensions and Social Security	143	\$9,684.15	\$133,689,682	11.0%

Data Note: The Spending Potential Index (SPI) is household-based, and represents the amount spent for a product or service relative to a national average of 100. Detail may not sum to totals due to rounding.

Source: Esri forecasts for 2016 and 2021; Consumer Spending data are derived from the 2013 and 2014 Consumer Expenditure Surveys, Bureau of Labor Statistics.

Household Budget Expenditures

Stonecrest, Tega Cay, SC
 2451 Highway 160 W, Fort Mill, South Carolina, 29708
 Drive Time: 20 minute radius

Prepared by YCED
 Latitude: 35.04714
 Longitude: -80.99151

Demographic Summary		2016	2021
Population		234,313	262,253
Households		90,034	100,213
Families		58,498	64,927
Median Age		35.2	35.5
Median Household Income		\$56,508	\$63,773

	Spending Potential	Average Amount	Total	Percent
	Index	Spent		
Total Expenditures	99	\$65,377.84	\$5,886,228,209	100.0%
Food	100	\$8,093.40	\$728,680,854	12.4%
Food at Home	99	\$4,939.62	\$444,733,486	7.6%
Food Away from Home	102	\$3,153.78	\$283,947,368	4.8%
Alcoholic Beverages	99	\$509.09	\$45,835,247	0.8%
Housing	100	\$20,372.91	\$1,834,254,581	31.2%
Shelter	101	\$15,657.91	\$1,409,744,182	23.9%
Utilities, Fuel and Public Services	97	\$4,715.00	\$424,510,399	7.2%
Household Operations	98	\$1,686.99	\$151,886,460	2.6%
Housekeeping Supplies	98	\$688.61	\$61,998,405	1.1%
Household Furnishings and Equipment	99	\$1,755.74	\$158,076,743	2.7%
Apparel and Services	101	\$2,031.70	\$182,921,786	3.1%
Transportation	99	\$8,042.74	\$724,120,461	12.3%
Travel	97	\$1,796.16	\$161,715,917	2.7%
Health Care	94	\$4,981.36	\$448,491,722	7.6%
Entertainment and Recreation	98	\$2,860.25	\$257,519,859	4.4%
Personal Care Products & Services	99	\$724.14	\$65,197,554	1.1%
Education	96	\$1,353.56	\$121,866,532	2.1%
Smoking Products	93	\$379.79	\$34,193,681	0.6%
Lotteries & Pari-mutuel Losses	93	\$58.38	\$5,256,487	0.1%
Legal Fees	100	\$155.57	\$14,006,804	0.2%
Funeral Expenses	84	\$72.50	\$6,527,270	0.1%
Safe Deposit Box Rentals	86	\$3.38	\$304,010	0.0%
Checking Account/Banking Service Charges	100	\$33.12	\$2,981,631	0.1%
Cemetery Lots/Vaults/Maintenance Fees	95	\$9.92	\$893,216	0.0%
Accounting Fees	90	\$81.10	\$7,302,178	0.1%
Miscellaneous Personal Services/Advertising/Fine	114	\$68.30	\$6,149,516	0.1%
Occupational Expenses	97	\$65.39	\$5,886,973	0.1%
Expenses for Other Properties	107	\$147.75	\$13,302,921	0.2%
Credit Card Membership Fees	95	\$3.65	\$328,740	0.0%
Shopping Club Membership Fees	102	\$17.01	\$1,531,894	0.0%
Support Payments/Cash Contributions/Gifts in Kind	96	\$2,219.91	\$199,867,066	3.4%
Life/Other Insurance	91	\$377.51	\$33,989,095	0.6%
Pensions and Social Security	100	\$6,787.89	\$611,140,603	10.4%

Data Note: The Spending Potential Index (SPI) is household-based, and represents the amount spent for a product or service relative to a national average of 100. Detail may not sum to totals due to rounding.

Source: Esri forecasts for 2016 and 2021; Consumer Spending data are derived from the 2013 and 2014 Consumer Expenditure Surveys, Bureau of Labor Statistics.

Medical Expenditures

Stonecrest, Tega Cay, SC
2451 Highway 160 W, Fort Mill, South Carolina, 29708
Drive Time: 5 minute radius

Prepared by YCED
Latitude: 35.04714
Longitude: -80.99151

Demographic Summary		2016	2021
Population		7,197	8,117
Households		2,802	3,148
Families		2,014	2,252
Median Household Income		\$76,799	\$93,858
Males per 100 Females		94.7	95.6
Population By Age			
Population <5 Years		7.4%	7.3%
Population 65+ Years		11.9%	12.8%
Median Age		37.8	38.0
	Spending Potential Index	Average Amount Spent	Total
Health Care	123	\$6,497.06	\$18,204,765
Medical Care	122	\$2,345.28	\$6,571,469
Physician Services	132	\$327.09	\$916,496
Dental Services	123	\$433.58	\$1,214,884
Eyecare Services	124	\$74.57	\$208,933
Lab Tests, X-Rays	129	\$80.38	\$225,219
Hospital Room and Hospital Services	131	\$229.13	\$642,031
Convalescent or Nursing Home Care	100	\$30.55	\$85,594
Other Medical services (1)	123	\$132.84	\$372,216
Nonprescription Drugs	119	\$148.19	\$415,234
Prescription Drugs	119	\$497.59	\$1,394,244
Nonprescription Vitamins	121	\$83.48	\$233,919
Medicare Prescription Drug Premium	98	\$93.37	\$261,634
Eyeglasses and Contact Lenses	120	\$107.55	\$301,367
Hearing Aids	113	\$26.24	\$73,512
Medical Equipment for General Use	120	\$5.35	\$14,997
Other Medical Supplies/Equipment (2)	126	\$75.37	\$211,188
Health Insurance	123	\$4,151.78	\$11,633,296
Blue Cross/Blue Shield	129	\$1,461.81	\$4,095,998
Fee for Service Health Plan	135	\$1,027.41	\$2,878,793
HMO	126	\$790.79	\$2,215,803
Medicare Payments	101	\$544.00	\$1,524,277
Long Term Care Insurance	109	\$103.69	\$290,551
Other Health Insurance (3)	102	\$224.08	\$627,875

Data Note: The Spending Potential Index (SPI) is household-based, and represents the amount spent for a product or service relative to a national average of 100. Detail may not sum to totals due to rounding.

(1) Other Medical Services includes Services by Medical Professionals other than Physicians, Nursing Services, Therapeutic Treatments, Blood Donation, Ambulance, Emergency Room, and Outpatient Hospital Services

(2) Other Medical Supplies includes Topicals, Dressings, Supportive and Convalescent Medical Equipment, Rental of Medical Equipment for General Use, and Rental of Supportive and Convalescent Medical Equipment.

(3) Other Health Insurance includes Medicare Supplements and Other Health Insurance excluding Blue Cross/Blue Shield.

Source: Esri forecasts for 2016 and 2021; Consumer Spending data are derived from the 2013 and 2014 Consumer Expenditure Surveys, Bureau of Labor Statistics.

Medical Expenditures

Stonecrest, Tega Cay, SC
2451 Highway 160 W, Fort Mill, South Carolina, 29708
Drive Time: 10 minute radius

Prepared by YCED
Latitude: 35.04714
Longitude: -80.99151

Demographic Summary		2016	2021
Population		38,173	43,549
Households		13,805	15,655
Families		10,413	11,757
Median Household Income		\$85,519	\$99,146
Males per 100 Females		95.7	96.0
Population By Age			
Population <5 Years		7.3%	7.1%
Population 65+ Years		10.4%	11.9%
Median Age		37.7	37.7
	Spending Potential Index	Average Amount Spent	Total
Health Care	129	\$6,846.97	\$94,522,385
Medical Care	129	\$2,469.82	\$34,095,919
Physician Services	139	\$344.49	\$4,755,716
Dental Services	132	\$465.05	\$6,420,033
Eyecare Services	130	\$78.78	\$1,087,559
Lab Tests, X-Rays	136	\$84.72	\$1,169,511
Hospital Room and Hospital Services	135	\$236.07	\$3,258,946
Convalescent or Nursing Home Care	110	\$33.59	\$463,671
Other Medical services (1)	130	\$140.11	\$1,934,154
Nonprescription Drugs	125	\$155.39	\$2,145,201
Prescription Drugs	124	\$517.75	\$7,147,597
Nonprescription Vitamins	129	\$88.40	\$1,220,431
Medicare Prescription Drug Premium	102	\$97.16	\$1,341,235
Eyeglasses and Contact Lenses	128	\$114.76	\$1,584,262
Hearing Aids	121	\$28.05	\$387,243
Medical Equipment for General Use	128	\$5.74	\$79,300
Other Medical Supplies/Equipment (2)	134	\$79.76	\$1,101,059
Health Insurance	130	\$4,377.14	\$60,426,466
Blue Cross/Blue Shield	135	\$1,538.24	\$21,235,429
Fee for Service Health Plan	142	\$1,080.04	\$14,910,014
HMO	133	\$837.34	\$11,559,453
Medicare Payments	105	\$568.54	\$7,848,716
Long Term Care Insurance	121	\$114.39	\$1,579,165
Other Health Insurance (3)	109	\$238.59	\$3,293,688

Data Note: The Spending Potential Index (SPI) is household-based, and represents the amount spent for a product or service relative to a national average of 100. Detail may not sum to totals due to rounding.

(1) Other Medical Services includes Services by Medical Professionals other than Physicians, Nursing Services, Therapeutic Treatments, Blood Donation, Ambulance, Emergency Room, and Outpatient Hospital Services

(2) Other Medical Supplies includes Topicals, Dressings, Supportive and Convalescent Medical Equipment, Rental of Medical Equipment for General Use, and Rental of Supportive and Convalescent Medical Equipment.

(3) Other Health Insurance includes Medicare Supplements and Other Health Insurance excluding Blue Cross/Blue Shield.

Source: Esri forecasts for 2016 and 2021; Consumer Spending data are derived from the 2013 and 2014 Consumer Expenditure Surveys, Bureau of Labor Statistics.

Medical Expenditures

Stonecrest, Tega Cay, SC
2451 Highway 160 W, Fort Mill, South Carolina, 29708
Drive Time: 20 minute radius

Prepared by YCED
Latitude: 35.04714
Longitude: -80.99151

Demographic Summary		2016	2021
Population		234,313	262,253
Households		90,034	100,213
Families		58,498	64,927
Median Household Income		\$56,508	\$63,773
Males per 100 Females		93.9	93.8
Population By Age			
Population <5 Years		7.2%	7.1%
Population 65+ Years		10.8%	12.0%
Median Age		35.2	35.5
	Spending Potential Index	Average Amount Spent	Total
Health Care	94	\$4,981.36	\$448,491,722
Medical Care	94	\$1,796.65	\$161,759,781
Physician Services	98	\$244.30	\$21,995,056
Dental Services	94	\$330.93	\$29,795,110
Eyecare Services	93	\$56.13	\$5,054,046
Lab Tests, X-Rays	96	\$59.61	\$5,366,838
Hospital Room and Hospital Services	95	\$167.38	\$15,070,127
Convalescent or Nursing Home Care	87	\$26.74	\$2,407,820
Other Medical services (1)	94	\$101.40	\$9,129,268
Nonprescription Drugs	95	\$117.78	\$10,604,134
Prescription Drugs	91	\$381.69	\$34,365,487
Nonprescription Vitamins	95	\$65.64	\$5,909,652
Medicare Prescription Drug Premium	83	\$78.99	\$7,111,359
Eyeglasses and Contact Lenses	93	\$82.90	\$7,463,399
Hearing Aids	87	\$20.15	\$1,814,220
Medical Equipment for General Use	99	\$4.41	\$397,031
Other Medical Supplies/Equipment (2)	98	\$58.60	\$5,276,235
Health Insurance	94	\$3,184.71	\$286,731,942
Blue Cross/Blue Shield	96	\$1,094.62	\$98,553,406
Fee for Service Health Plan	100	\$760.90	\$68,507,217
HMO	98	\$615.98	\$55,459,403
Medicare Payments	84	\$452.99	\$40,784,530
Long Term Care Insurance	84	\$79.71	\$7,176,210
Other Health Insurance (3)	82	\$180.50	\$16,251,177

Data Note: The Spending Potential Index (SPI) is household-based, and represents the amount spent for a product or service relative to a national average of 100. Detail may not sum to totals due to rounding.

(1) Other Medical Services includes Services by Medical Professionals other than Physicians, Nursing Services, Therapeutic Treatments, Blood Donation, Ambulance, Emergency Room, and Outpatient Hospital Services

(2) Other Medical Supplies includes Topicals, Dressings, Supportive and Convalescent Medical Equipment, Rental of Medical Equipment for General Use, and Rental of Supportive and Convalescent Medical Equipment.

(3) Other Health Insurance includes Medicare Supplements and Other Health Insurance excluding Blue Cross/Blue Shield.

Source: Esri forecasts for 2016 and 2021; Consumer Spending data are derived from the 2013 and 2014 Consumer Expenditure Surveys, Bureau of Labor Statistics.

Retail Goods and Services Expenditures

Stonecrest, Tega Cay, SC
2451 Highway 160 W, Fort Mill, South Carolina, 29708
Drive Time: 5 minute radius

Prepared by YCED
Latitude: 35.04714
Longitude: -80.99151

Top Tapestry Segments	Percent	Demographic Summary	2016	2021
Middleburg (4C)	54.4%	Population	7,197	8,117
Boomburbs (1C)	45.6%	Households	2,802	3,148
Top Tier (1A)	0.0%	Families	2,014	2,252
Professional Pride (1B)	0.0%	Median Age	37.8	38.0
Savvy Suburbanites (1D)	0.0%	Median Household Income	\$76,799	\$93,858
		Spending Potential Index	Average Amount Spent	Total
Apparel and Services		126	\$2,529.63	\$7,088,035
Men's		123	\$493.50	\$1,382,782
Women's		122	\$838.14	\$2,348,480
Children's		134	\$433.46	\$1,214,565
Footwear		126	\$538.32	\$1,508,378
Watches & Jewelry		129	\$133.56	\$374,226
Apparel Products and Services (1)		129	\$92.65	\$259,604
Computer				
Computers and Hardware for Home Use		128	\$221.71	\$621,237
Portable Memory		131	\$6.17	\$17,295
Computer Software		123	\$15.91	\$44,591
Computer Accessories		125	\$22.30	\$62,489
Entertainment & Recreation		127	\$3,709.72	\$10,394,643
Fees and Admissions		136	\$782.58	\$2,192,787
Membership Fees for Clubs (2)		129	\$247.31	\$692,961
Fees for Participant Sports, excl. Trips		146	\$131.03	\$367,140
Tickets to Theatre/Operas/Concerts		121	\$64.08	\$179,545
Tickets to Movies/Museums/Parks		136	\$90.58	\$253,801
Admission to Sporting Events, excl. Trips		128	\$68.18	\$191,040
Fees for Recreational Lessons		147	\$180.67	\$506,230
Dating Services		107	\$0.74	\$2,071
TV/Video/Audio		121	\$1,458.37	\$4,086,339
Cable and Satellite Television Services		119	\$1,063.28	\$2,979,311
Televisions		129	\$142.02	\$397,937
Satellite Dishes		158	\$2.30	\$6,439
VCRs, Video Cameras, and DVD Players		126	\$10.19	\$28,550
Miscellaneous Video Equipment		150	\$11.57	\$32,411
Video Cassettes and DVDs		122	\$22.46	\$62,936
Video Game Hardware/Accessories		124	\$31.75	\$88,974
Video Game Software		128	\$17.67	\$49,509
Streaming/Downloaded Video		129	\$23.53	\$65,944
Rental of Video Cassettes and DVDs		129	\$21.01	\$58,872
Installation of Televisions		165	\$1.52	\$4,267
Audio (3)		131	\$107.04	\$299,933
Rental and Repair of TV/Radio/Sound Equipment		102	\$4.02	\$11,255
Pets		127	\$681.78	\$1,910,336
Toys/Games/Crafts/Hobbies (4)		128	\$146.05	\$409,222
Recreational Vehicles and Fees (5)		143	\$153.80	\$430,954
Sports/Recreation/Exercise Equipment (6)		134	\$222.13	\$622,410
Photo Equipment and Supplies (7)		137	\$75.39	\$211,252
Reading (8)		118	\$154.80	\$433,739
Catered Affairs (9)		135	\$34.83	\$97,603
Food		124	\$9,988.48	\$27,987,728
Food at Home		121	\$6,036.67	\$16,914,760
Bakery and Cereal Products		120	\$806.51	\$2,259,838
Meats, Poultry, Fish, and Eggs		120	\$1,337.43	\$3,747,469
Dairy Products		118	\$626.89	\$1,756,546
Fruits and Vegetables		121	\$1,160.45	\$3,251,589
Snacks and Other Food at Home (10)		123	\$2,105.40	\$5,899,319
Food Away from Home		128	\$3,951.81	\$11,072,967
Alcoholic Beverages		121	\$619.60	\$1,736,111

Data Note: The Spending Potential Index (SPI) is household-based, and represents the amount spent for a product or service relative to a national average of 100. Detail may not sum to totals due to rounding. This report is not a comprehensive list of all consumer spending variables therefore the variables in each section may not sum to totals.

Source: Esri forecasts for 2016 and 2021; Consumer Spending data are derived from the 2013 and 2014 Consumer Expenditure Surveys, Bureau of Labor Statistics.

Retail Goods and Services Expenditures

Stonecrest, Tega Cay, SC
2451 Highway 160 W, Fort Mill, South Carolina, 29708
Drive Time: 5 minute radius

Prepared by YCED
Latitude: 35.04714
Longitude: -80.99151

	Spending Potential Index	Average Amount Spent	Total
Financial			
Value of Stocks/Bonds/Mutual Funds	123	\$9,251.08	\$25,921,535
Value of Retirement Plans	123	\$32,115.43	\$89,987,429
Value of Other Financial Assets	115	\$1,303.22	\$3,651,630
Vehicle Loan Amount excluding Interest	134	\$3,258.34	\$9,129,874
Value of Credit Card Debt	122	\$696.78	\$1,952,384
Health			
Nonprescription Drugs	119	\$148.19	\$415,234
Prescription Drugs	119	\$497.59	\$1,394,244
Eyeglasses and Contact Lenses	120	\$107.55	\$301,367
Home			
Mortgage Payment and Basics (11)	141	\$12,046.72	\$33,754,920
Maintenance and Remodeling Services	133	\$2,332.83	\$6,536,592
Maintenance and Remodeling Materials (12)	137	\$496.82	\$1,392,079
Utilities, Fuel, and Public Services	121	\$5,896.75	\$16,522,681
Household Furnishings and Equipment			
Household Textiles (13)	125	\$108.60	\$304,297
Furniture	130	\$640.11	\$1,793,578
Rugs	122	\$29.73	\$83,304
Major Appliances (14)	132	\$374.73	\$1,049,987
Housewares (15)	127	\$106.52	\$298,456
Small Appliances	119	\$56.13	\$157,263
Luggage	133	\$12.27	\$34,368
Telephones and Accessories	125	\$88.86	\$248,996
Household Operations			
Child Care	149	\$632.34	\$1,771,820
Lawn and Garden (16)	126	\$513.65	\$1,439,248
Moving/Storage/Freight Express	119	\$75.24	\$210,834
Housekeeping Supplies (17)	124	\$868.86	\$2,434,554
Insurance			
Owners and Renters Insurance	130	\$599.87	\$1,680,839
Vehicle Insurance	123	\$1,378.15	\$3,861,587
Life/Other Insurance	125	\$516.42	\$1,446,999
Health Insurance	123	\$4,151.78	\$11,633,296
Personal Care Products (18)	126	\$546.81	\$1,532,174
School Books and Supplies (19)	132	\$217.12	\$608,382
Smoking Products	104	\$425.29	\$1,191,672
Transportation			
Payments on Vehicles excluding Leases	133	\$2,765.37	\$7,748,571
Gasoline and Motor Oil	125	\$3,848.79	\$10,784,304
Vehicle Maintenance and Repairs	124	\$1,282.83	\$3,594,492
Travel			
Airline Fares	130	\$591.50	\$1,657,378
Lodging on Trips	131	\$607.34	\$1,701,768
Auto/Truck Rental on Trips	132	\$31.82	\$89,164
Food and Drink on Trips	130	\$568.39	\$1,592,637

Data Note: The Spending Potential Index (SPI) is household-based, and represents the amount spent for a product or service relative to a national average of 100. Detail may not sum to totals due to rounding. This report is not a comprehensive list of all consumer spending variables therefore the variables in each section may not sum to totals.

Source: Esri forecasts for 2016 and 2021; Consumer Spending data are derived from the 2013 and 2014 Consumer Expenditure Surveys, Bureau of Labor Statistics.

Stonecrest, Tega Cay, SC
2451 Highway 160 W, Fort Mill, South Carolina, 29708
Drive Time: 5 minute radius

Prepared by YCED
Latitude: 35.04714
Longitude: -80.99151

- (1) Apparel Products and Services** includes material for making clothes, sewing patterns and notions, shoe repair and other shoe services, apparel laundry and dry cleaning, alteration, repair and tailoring of apparel, clothing rental and storage, and watch and jewelry repair.
- (2) Membership Fees for Clubs** includes membership fees for social, recreational, and civic clubs.
- (3) Audio** includes satellite radio service, sound components and systems, digital audio players, records, CDs, audio tapes, streaming/downloaded audio, tape recorders, radios, musical instruments and accessories, and rental and repair of musical instruments.
- (4) Toys and Games** includes toys, games, arts and crafts, tricycles, playground equipment, arcade games, and online entertainment and games.
- (5) Recreational Vehicles & Fees** includes docking and landing fees for boats and planes, purchase and rental of RVs or boats, and camp fees.
- (6) Sports/Recreation/Exercise Equipment** includes exercise equipment and gear, game tables, bicycles, camping equipment, hunting and fishing equipment, winter sports equipment, water sports equipment, other sports equipment, and rental/repair of sports/recreation/exercise equipment.
- (7) Photo Equipment and Supplies** includes film, film processing, photographic equipment, rental and repair of photo equipment, and photographer fees.
- (8) Reading** includes digital book readers, books, magazine and newspaper subscriptions, and single copies of magazines and newspapers..
- (9) Catered Affairs** includes expenses associated with live entertainment and rental of party supplies.
- (10) Snacks and Other Food at Home** includes candy, chewing gum, sugar, artificial sweeteners, jam, jelly, preserves, margarine, fat, oil, salad dressing, nondairy cream and milk, peanut butter, frozen prepared food, potato chips, nuts, salt, spices, seasonings, olives, pickles, relishes, sauces, gravy, other condiments, soup, prepared salad, prepared dessert, baby food, miscellaneous prepared food, and nonalcoholic beverages.
- (11) Mortgage Payment and Basics** includes mortgage interest, mortgage principal, property taxes, homeowners insurance, and ground rent.
- (12) Maintenance and Remodeling Materials** includes supplies/tools/equipment for painting and wallpapering, plumbing supplies and equipment, electrical/heating/AC supplies, materials for hard surface flooring, materials for roofing/gutters, materials for plaster/panel/siding, materials for patio/fence/brick work, landscaping materials, and insulation materials for owned homes.
- (13) Household Textiles** includes bathroom linens, bedroom linens, kitchen linens, dining room linens, other linens, curtains, draperies, slipcovers, decorative pillows, and materials for slipcovers and curtains.
- (14) Major Appliances** includes dishwashers, disposals, refrigerators, freezers, washers, dryers, stoves, ovens, microwaves, window air conditioners, electric floor cleaning equipment, sewing machines, and miscellaneous appliances.
- (15) Housewares** includes plastic dinnerware, china, flatware, glassware, serving pieces, nonelectric cookware, and tableware.
- (16) Lawn and Garden** includes lawn and garden supplies, equipment and care service, indoor plants, fresh flowers, and repair/rental of lawn and garden equipment.
- (17) Housekeeping Supplies** includes soaps and laundry detergents, cleaning products, toilet tissue, paper towels, napkins, paper/plastic/foil products, stationery, giftwrap supplies, postage, and delivery services.
- (18) Personal Care Products** includes hair care products, nonelectric articles for hair, wigs, hairpieces, oral hygiene products, shaving needs, perfume, cosmetics, skincare, bath products, nail products, deodorant, feminine hygiene products, adult diapers, and personal care appliances.
- (19) School Books and Supplies** includes school books and supplies for College, Elementary school, High school, Vocational/Technical School, Preschool/Other Schools, and Other School Supplies.

Data Note: The Spending Potential Index (SPI) is household-based, and represents the amount spent for a product or service relative to a national average of 100. Detail may not sum to totals due to rounding. This report is not a comprehensive list of all consumer spending variables therefore the variables in each section may not sum to totals.

Source: Esri forecasts for 2016 and 2021; Consumer Spending data are derived from the 2013 and 2014 Consumer Expenditure Surveys, Bureau of Labor Statistics.

Retail Goods and Services Expenditures

Stonecrest, Tega Cay, SC
2451 Highway 160 W, Fort Mill, South Carolina, 29708
Drive Time: 10 minute radius

Prepared by YCED
Latitude: 35.04714
Longitude: -80.99151

Top Tapestry Segments	Percent	Demographic Summary	2016	2021
Boomburbs (1C)	34.3%	Population	38,173	43,549
Middleburg (4C)	29.3%	Households	13,805	15,655
Savvy Suburbanites (1D)	10.0%	Families	10,413	11,757
Up and Coming Families (7A)	9.4%	Median Age	37.7	37.7
Soccer Moms (4A)	8.1%	Median Household Income	\$85,519	\$99,146
		Spending Potential Index	Average Amount Spent	Total
Apparel and Services		132	\$2,665.75	\$36,800,618
Men's		130	\$522.72	\$7,216,160
Women's		129	\$886.52	\$12,238,342
Children's		139	\$448.61	\$6,193,101
Footwear		132	\$566.64	\$7,822,471
Watches & Jewelry		137	\$142.51	\$1,967,285
Apparel Products and Services (1)		137	\$98.75	\$1,363,260
Computer				
Computers and Hardware for Home Use		135	\$234.49	\$3,237,126
Portable Memory		138	\$6.48	\$89,456
Computer Software		131	\$16.92	\$233,634
Computer Accessories		134	\$23.76	\$328,068
Entertainment & Recreation		134	\$3,911.41	\$53,997,014
Fees and Admissions		147	\$847.00	\$11,692,903
Membership Fees for Clubs (2)		141	\$269.53	\$3,720,830
Fees for Participant Sports, excl. Trips		156	\$139.67	\$1,928,076
Tickets to Theatre/Operas/Concerts		134	\$70.86	\$978,202
Tickets to Movies/Museums/Parks		144	\$95.81	\$1,322,660
Admission to Sporting Events, excl. Trips		139	\$74.14	\$1,023,439
Fees for Recreational Lessons		159	\$196.23	\$2,708,928
Dating Services		113	\$0.78	\$10,768
TV/Video/Audio		126	\$1,517.46	\$20,948,539
Cable and Satellite Television Services		123	\$1,105.25	\$15,257,960
Televisions		135	\$148.22	\$2,046,191
Satellite Dishes		159	\$2.32	\$32,084
VCRs, Video Cameras, and DVD Players		131	\$10.62	\$146,678
Miscellaneous Video Equipment		152	\$11.67	\$161,069
Video Cassettes and DVDs		126	\$23.29	\$321,541
Video Game Hardware/Accessories		127	\$32.68	\$451,154
Video Game Software		131	\$18.07	\$249,404
Streaming/Downloaded Video		135	\$24.50	\$338,248
Rental of Video Cassettes and DVDs		133	\$21.73	\$299,949
Installation of Televisions		172	\$1.58	\$21,744
Audio (3)		138	\$113.22	\$1,562,976
Rental and Repair of TV/Radio/Sound Equipment		110	\$4.31	\$59,541
Pets		133	\$714.18	\$9,859,207
Toys/Games/Crafts/Hobbies (4)		134	\$152.90	\$2,110,756
Recreational Vehicles and Fees (5)		152	\$163.61	\$2,258,630
Sports/Recreation/Exercise Equipment (6)		141	\$233.41	\$3,222,252
Photo Equipment and Supplies (7)		144	\$79.53	\$1,097,935
Reading (8)		126	\$165.59	\$2,285,949
Catered Affairs (9)		146	\$37.73	\$520,843
Food		129	\$10,448.86	\$144,246,498
Food at Home		127	\$6,311.08	\$87,124,480
Bakery and Cereal Products		125	\$844.46	\$11,657,827
Meats, Poultry, Fish, and Eggs		125	\$1,392.78	\$19,227,362
Dairy Products		124	\$658.78	\$9,094,523
Fruits and Vegetables		128	\$1,220.23	\$16,845,268
Snacks and Other Food at Home (10)		128	\$2,194.82	\$30,299,500
Food Away from Home		134	\$4,137.78	\$57,122,017
Alcoholic Beverages		129	\$660.59	\$9,119,395

Data Note: The Spending Potential Index (SPI) is household-based, and represents the amount spent for a product or service relative to a national average of 100. Detail may not sum to totals due to rounding. This report is not a comprehensive list of all consumer spending variables therefore the variables in each section may not sum to totals.

Source: Esri forecasts for 2016 and 2021; Consumer Spending data are derived from the 2013 and 2014 Consumer Expenditure Surveys, Bureau of Labor Statistics.

Retail Goods and Services Expenditures

Stonecrest, Tega Cay, SC
2451 Highway 160 W, Fort Mill, South Carolina, 29708
Drive Time: 10 minute radius

Prepared by YCED
Latitude: 35.04714
Longitude: -80.99151

	Spending Potential Index	Average Amount Spent	Total
Financial			
Value of Stocks/Bonds/Mutual Funds	136	\$10,228.20	\$141,200,340
Value of Retirement Plans	136	\$35,609.19	\$491,584,927
Value of Other Financial Assets	124	\$1,400.80	\$19,338,083
Vehicle Loan Amount excluding Interest	137	\$3,343.89	\$46,162,394
Value of Credit Card Debt	131	\$746.39	\$10,303,966
Health			
Nonprescription Drugs	125	\$155.39	\$2,145,201
Prescription Drugs	124	\$517.75	\$7,147,597
Eyeglasses and Contact Lenses	128	\$114.76	\$1,584,262
Home			
Mortgage Payment and Basics (11)	151	\$12,948.24	\$178,750,515
Maintenance and Remodeling Services	144	\$2,519.53	\$34,782,171
Maintenance and Remodeling Materials (12)	144	\$523.28	\$7,223,827
Utilities, Fuel, and Public Services	126	\$6,163.08	\$85,081,312
Household Furnishings and Equipment			
Household Textiles (13)	133	\$115.46	\$1,593,922
Furniture	137	\$673.59	\$9,298,855
Rugs	135	\$32.87	\$453,784
Major Appliances (14)	139	\$394.99	\$5,452,874
Housewares (15)	133	\$111.63	\$1,541,002
Small Appliances	127	\$59.62	\$823,041
Luggage	143	\$13.25	\$182,937
Telephones and Accessories	131	\$92.91	\$1,282,667
Household Operations			
Child Care	157	\$664.37	\$9,171,594
Lawn and Garden (16)	135	\$549.49	\$7,585,725
Moving/Storage/Freight Express	124	\$78.83	\$1,088,225
Housekeeping Supplies (17)	129	\$909.53	\$12,556,003
Insurance			
Owners and Renters Insurance	136	\$629.45	\$8,689,564
Vehicle Insurance	129	\$1,441.96	\$19,906,296
Life/Other Insurance	134	\$555.79	\$7,672,647
Health Insurance	130	\$4,377.14	\$60,426,466
Personal Care Products (18)	132	\$573.31	\$7,914,582
School Books and Supplies (19)	139	\$227.66	\$3,142,822
Smoking Products	106	\$433.51	\$5,984,634
Transportation			
Payments on Vehicles excluding Leases	137	\$2,849.08	\$39,331,499
Gasoline and Motor Oil	129	\$3,981.53	\$54,964,984
Vehicle Maintenance and Repairs	131	\$1,351.15	\$18,652,679
Travel			
Airline Fares	141	\$643.43	\$8,882,611
Lodging on Trips	142	\$656.42	\$9,061,832
Auto/Truck Rental on Trips	142	\$34.16	\$471,571
Food and Drink on Trips	139	\$610.89	\$8,433,329

Data Note: The Spending Potential Index (SPI) is household-based, and represents the amount spent for a product or service relative to a national average of 100. Detail may not sum to totals due to rounding. This report is not a comprehensive list of all consumer spending variables therefore the variables in each section may not sum to totals.

Source: Esri forecasts for 2016 and 2021; Consumer Spending data are derived from the 2013 and 2014 Consumer Expenditure Surveys, Bureau of Labor Statistics.

Stonecrest, Tega Cay, SC
2451 Highway 160 W, Fort Mill, South Carolina, 29708
Drive Time: 10 minute radius

Prepared by YCED
Latitude: 35.04714
Longitude: -80.99151

- (1) Apparel Products and Services** includes material for making clothes, sewing patterns and notions, shoe repair and other shoe services, apparel laundry and dry cleaning, alteration, repair and tailoring of apparel, clothing rental and storage, and watch and jewelry repair.
- (2) Membership Fees for Clubs** includes membership fees for social, recreational, and civic clubs.
- (3) Audio** includes satellite radio service, sound components and systems, digital audio players, records, CDs, audio tapes, streaming/downloaded audio, tape recorders, radios, musical instruments and accessories, and rental and repair of musical instruments.
- (4) Toys and Games** includes toys, games, arts and crafts, tricycles, playground equipment, arcade games, and online entertainment and games.
- (5) Recreational Vehicles & Fees** includes docking and landing fees for boats and planes, purchase and rental of RVs or boats, and camp fees.
- (6) Sports/Recreation/Exercise Equipment** includes exercise equipment and gear, game tables, bicycles, camping equipment, hunting and fishing equipment, winter sports equipment, water sports equipment, other sports equipment, and rental/repair of sports/recreation/exercise equipment.
- (7) Photo Equipment and Supplies** includes film, film processing, photographic equipment, rental and repair of photo equipment, and photographer fees.
- (8) Reading** includes digital book readers, books, magazine and newspaper subscriptions, and single copies of magazines and newspapers..
- (9) Catered Affairs** includes expenses associated with live entertainment and rental of party supplies.
- (10) Snacks and Other Food at Home** includes candy, chewing gum, sugar, artificial sweeteners, jam, jelly, preserves, margarine, fat, oil, salad dressing, nondairy cream and milk, peanut butter, frozen prepared food, potato chips, nuts, salt, spices, seasonings, olives, pickles, relishes, sauces, gravy, other condiments, soup, prepared salad, prepared dessert, baby food, miscellaneous prepared food, and nonalcoholic beverages.
- (11) Mortgage Payment and Basics** includes mortgage interest, mortgage principal, property taxes, homeowners insurance, and ground rent.
- (12) Maintenance and Remodeling Materials** includes supplies/tools/equipment for painting and wallpapering, plumbing supplies and equipment, electrical/heating/AC supplies, materials for hard surface flooring, materials for roofing/gutters, materials for plaster/panel/siding, materials for patio/fence/brick work, landscaping materials, and insulation materials for owned homes.
- (13) Household Textiles** includes bathroom linens, bedroom linens, kitchen linens, dining room linens, other linens, curtains, draperies, slipcovers, decorative pillows, and materials for slipcovers and curtains.
- (14) Major Appliances** includes dishwashers, disposals, refrigerators, freezers, washers, dryers, stoves, ovens, microwaves, window air conditioners, electric floor cleaning equipment, sewing machines, and miscellaneous appliances.
- (15) Housewares** includes plastic dinnerware, china, flatware, glassware, serving pieces, nonelectric cookware, and tableware.
- (16) Lawn and Garden** includes lawn and garden supplies, equipment and care service, indoor plants, fresh flowers, and repair/rental of lawn and garden equipment.
- (17) Housekeeping Supplies** includes soaps and laundry detergents, cleaning products, toilet tissue, paper towels, napkins, paper/plastic/foil products, stationery, giftwrap supplies, postage, and delivery services.
- (18) Personal Care Products** includes hair care products, nonelectric articles for hair, wigs, hairpieces, oral hygiene products, shaving needs, perfume, cosmetics, skincare, bath products, nail products, deodorant, feminine hygiene products, adult diapers, and personal care appliances.
- (19) School Books and Supplies** includes school books and supplies for College, Elementary school, High school, Vocational/Technical School, Preschool/Other Schools, and Other School Supplies.

Data Note: The Spending Potential Index (SPI) is household-based, and represents the amount spent for a product or service relative to a national average of 100. Detail may not sum to totals due to rounding. This report is not a comprehensive list of all consumer spending variables therefore the variables in each section may not sum to totals.

Source: Esri forecasts for 2016 and 2021; Consumer Spending data are derived from the 2013 and 2014 Consumer Expenditure Surveys, Bureau of Labor Statistics.

Retail Goods and Services Expenditures

Stonecrest, Tega Cay, SC
 2451 Highway 160 W, Fort Mill, South Carolina, 29708
 Drive Time: 20 minute radius

Prepared by YCED
 Latitude: 35.04714
 Longitude: -80.99151

Top Tapestry Segments	Percent	Demographic Summary	2016	2021
Bright Young Professionals (8C)	15.7%	Population	234,313	262,253
Middleburg (4C)	13.7%	Households	90,034	100,213
Up and Coming Families (7A)	11.2%	Families	58,498	64,927
Boomburbs (1C)	9.1%	Median Age	35.2	35.5
Young and Restless (11B)	7.7%	Median Household Income	\$56,508	\$63,773
		Spending Potential Index	Average Amount Spent	Total
Apparel and Services		101	\$2,031.70	\$182,921,786
Men's		100	\$401.45	\$36,144,376
Women's		99	\$676.84	\$60,938,450
Children's		107	\$345.46	\$31,103,200
Footwear		101	\$432.12	\$38,905,207
Watches & Jewelry		99	\$103.12	\$9,284,114
Apparel Products and Services (1)		101	\$72.71	\$6,546,439
Computer				
Computers and Hardware for Home Use		103	\$178.84	\$16,101,510
Portable Memory		104	\$4.88	\$439,532
Computer Software		103	\$13.39	\$1,205,299
Computer Accessories		98	\$17.47	\$1,572,527
Entertainment & Recreation		98	\$2,860.25	\$257,519,859
Fees and Admissions		100	\$577.55	\$51,999,229
Membership Fees for Clubs (2)		97	\$185.26	\$16,679,342
Fees for Participant Sports, excl. Trips		104	\$93.20	\$8,390,887
Tickets to Theatre/Operas/Concerts		95	\$50.31	\$4,529,556
Tickets to Movies/Museums/Parks		106	\$70.50	\$6,347,788
Admission to Sporting Events, excl. Trips		99	\$52.97	\$4,769,193
Fees for Recreational Lessons		101	\$124.56	\$11,214,602
Dating Services		109	\$0.75	\$67,861
TV/Video/Audio		98	\$1,182.62	\$106,475,819
Cable and Satellite Television Services		97	\$866.80	\$78,041,661
Televisions		103	\$112.85	\$10,159,905
Satellite Dishes		105	\$1.54	\$138,290
VCRs, Video Cameras, and DVD Players		104	\$8.39	\$755,128
Miscellaneous Video Equipment		114	\$8.75	\$788,206
Video Cassettes and DVDs		102	\$18.85	\$1,696,815
Video Game Hardware/Accessories		106	\$27.25	\$2,453,225
Video Game Software		111	\$15.25	\$1,373,415
Streaming/Downloaded Video		107	\$19.36	\$1,742,967
Rental of Video Cassettes and DVDs		106	\$17.34	\$1,561,576
Installation of Televisions		103	\$0.95	\$85,976
Audio (3)		99	\$81.44	\$7,332,675
Rental and Repair of TV/Radio/Sound Equipment		98	\$3.84	\$345,982
Pets		96	\$512.11	\$46,107,345
Toys/Games/Crafts/Hobbies (4)		100	\$114.18	\$10,279,746
Recreational Vehicles and Fees (5)		98	\$104.96	\$9,449,625
Sports/Recreation/Exercise Equipment (6)		99	\$164.56	\$14,816,233
Photo Equipment and Supplies (7)		102	\$56.25	\$5,064,372
Reading (8)		94	\$123.09	\$11,082,644
Catered Affairs (9)		96	\$24.93	\$2,244,847
Food		100	\$8,093.40	\$728,680,854
Food at Home		99	\$4,939.62	\$444,733,486
Bakery and Cereal Products		98	\$660.73	\$59,488,172
Meats, Poultry, Fish, and Eggs		99	\$1,103.37	\$99,340,653
Dairy Products		97	\$515.25	\$46,389,577
Fruits and Vegetables		99	\$950.45	\$85,572,576
Snacks and Other Food at Home (10)		100	\$1,709.83	\$153,942,509
Food Away from Home		102	\$3,153.78	\$283,947,368
Alcoholic Beverages		99	\$509.09	\$45,835,247

Data Note: The Spending Potential Index (SPI) is household-based, and represents the amount spent for a product or service relative to a national average of 100. Detail may not sum to totals due to rounding. This report is not a comprehensive list of all consumer spending variables therefore the variables in each section may not sum to totals.

Source: Esri forecasts for 2016 and 2021; Consumer Spending data are derived from the 2013 and 2014 Consumer Expenditure Surveys, Bureau of Labor Statistics.

Retail Goods and Services Expenditures

Stonecrest, Tega Cay, SC
2451 Highway 160 W, Fort Mill, South Carolina, 29708
Drive Time: 20 minute radius

Prepared by YCED
Latitude: 35.04714
Longitude: -80.99151

	Spending Potential Index	Average Amount Spent	Total
Financial			
Value of Stocks/Bonds/Mutual Funds	93	\$6,944.14	\$625,208,834
Value of Retirement Plans	87	\$22,768.56	\$2,049,944,598
Value of Other Financial Assets	98	\$1,108.48	\$99,800,724
Vehicle Loan Amount excluding Interest	105	\$2,553.05	\$229,861,493
Value of Credit Card Debt	95	\$543.45	\$48,929,144
Health			
Nonprescription Drugs	95	\$117.78	\$10,604,134
Prescription Drugs	91	\$381.69	\$34,365,487
Eyeglasses and Contact Lenses	93	\$82.90	\$7,463,399
Home			
Mortgage Payment and Basics (11)	96	\$8,218.55	\$739,949,179
Maintenance and Remodeling Services	91	\$1,592.83	\$143,409,160
Maintenance and Remodeling Materials (12)	92	\$332.74	\$29,957,481
Utilities, Fuel, and Public Services	97	\$4,715.00	\$424,510,399
Household Furnishings and Equipment			
Household Textiles (13)	98	\$85.19	\$7,670,026
Furniture	102	\$502.80	\$45,268,796
Rugs	93	\$22.79	\$2,051,548
Major Appliances (14)	96	\$271.88	\$24,478,377
Housewares (15)	101	\$84.24	\$7,584,506
Small Appliances	97	\$45.85	\$4,128,449
Luggage	101	\$9.31	\$838,138
Telephones and Accessories	102	\$72.76	\$6,550,743
Household Operations			
Child Care	108	\$458.39	\$41,271,098
Lawn and Garden (16)	90	\$367.07	\$33,048,992
Moving/Storage/Freight Express	103	\$65.64	\$5,909,701
Housekeeping Supplies (17)	98	\$688.61	\$61,998,405
Insurance			
Owners and Renters Insurance	91	\$422.19	\$38,011,569
Vehicle Insurance	99	\$1,105.76	\$99,555,942
Life/Other Insurance	91	\$377.51	\$33,989,095
Health Insurance	94	\$3,184.71	\$286,731,942
Personal Care Products (18)	101	\$436.43	\$39,293,526
School Books and Supplies (19)	103	\$170.02	\$15,307,149
Smoking Products	93	\$379.79	\$34,193,681
Transportation			
Payments on Vehicles excluding Leases	102	\$2,120.15	\$190,885,760
Gasoline and Motor Oil	100	\$3,071.41	\$276,531,060
Vehicle Maintenance and Repairs	98	\$1,012.86	\$91,191,566
Travel			
Airline Fares	97	\$444.23	\$39,996,178
Lodging on Trips	95	\$441.57	\$39,755,980
Auto/Truck Rental on Trips	98	\$23.62	\$2,126,592
Food and Drink on Trips	96	\$422.50	\$38,039,497

Data Note: The Spending Potential Index (SPI) is household-based, and represents the amount spent for a product or service relative to a national average of 100. Detail may not sum to totals due to rounding. This report is not a comprehensive list of all consumer spending variables therefore the variables in each section may not sum to totals.

Source: Esri forecasts for 2016 and 2021; Consumer Spending data are derived from the 2013 and 2014 Consumer Expenditure Surveys, Bureau of Labor Statistics.

Stonecrest, Tega Cay, SC
2451 Highway 160 W, Fort Mill, South Carolina, 29708
Drive Time: 20 minute radius

Prepared by YCED
Latitude: 35.04714
Longitude: -80.99151

- (1) Apparel Products and Services** includes material for making clothes, sewing patterns and notions, shoe repair and other shoe services, apparel laundry and dry cleaning, alteration, repair and tailoring of apparel, clothing rental and storage, and watch and jewelry repair.
- (2) Membership Fees for Clubs** includes membership fees for social, recreational, and civic clubs.
- (3) Audio** includes satellite radio service, sound components and systems, digital audio players, records, CDs, audio tapes, streaming/downloaded audio, tape recorders, radios, musical instruments and accessories, and rental and repair of musical instruments.
- (4) Toys and Games** includes toys, games, arts and crafts, tricycles, playground equipment, arcade games, and online entertainment and games.
- (5) Recreational Vehicles & Fees** includes docking and landing fees for boats and planes, purchase and rental of RVs or boats, and camp fees.
- (6) Sports/Recreation/Exercise Equipment** includes exercise equipment and gear, game tables, bicycles, camping equipment, hunting and fishing equipment, winter sports equipment, water sports equipment, other sports equipment, and rental/repair of sports/recreation/exercise equipment.
- (7) Photo Equipment and Supplies** includes film, film processing, photographic equipment, rental and repair of photo equipment, and photographer fees.
- (8) Reading** includes digital book readers, books, magazine and newspaper subscriptions, and single copies of magazines and newspapers..
- (9) Catered Affairs** includes expenses associated with live entertainment and rental of party supplies.
- (10) Snacks and Other Food at Home** includes candy, chewing gum, sugar, artificial sweeteners, jam, jelly, preserves, margarine, fat, oil, salad dressing, nondairy cream and milk, peanut butter, frozen prepared food, potato chips, nuts, salt, spices, seasonings, olives, pickles, relishes, sauces, gravy, other condiments, soup, prepared salad, prepared dessert, baby food, miscellaneous prepared food, and nonalcoholic beverages.
- (11) Mortgage Payment and Basics** includes mortgage interest, mortgage principal, property taxes, homeowners insurance, and ground rent.
- (12) Maintenance and Remodeling Materials** includes supplies/tools/equipment for painting and wallpapering, plumbing supplies and equipment, electrical/heating/AC supplies, materials for hard surface flooring, materials for roofing/gutters, materials for plaster/panel/siding, materials for patio/fence/brick work, landscaping materials, and insulation materials for owned homes.
- (13) Household Textiles** includes bathroom linens, bedroom linens, kitchen linens, dining room linens, other linens, curtains, draperies, slipcovers, decorative pillows, and materials for slipcovers and curtains.
- (14) Major Appliances** includes dishwashers, disposals, refrigerators, freezers, washers, dryers, stoves, ovens, microwaves, window air conditioners, electric floor cleaning equipment, sewing machines, and miscellaneous appliances.
- (15) Housewares** includes plastic dinnerware, china, flatware, glassware, serving pieces, nonelectric cookware, and tableware.
- (16) Lawn and Garden** includes lawn and garden supplies, equipment and care service, indoor plants, fresh flowers, and repair/rental of lawn and garden equipment.
- (17) Housekeeping Supplies** includes soaps and laundry detergents, cleaning products, toilet tissue, paper towels, napkins, paper/plastic/foil products, stationery, giftwrap supplies, postage, and delivery services.
- (18) Personal Care Products** includes hair care products, nonelectric articles for hair, wigs, hairpieces, oral hygiene products, shaving needs, perfume, cosmetics, skincare, bath products, nail products, deodorant, feminine hygiene products, adult diapers, and personal care appliances.
- (19) School Books and Supplies** includes school books and supplies for College, Elementary school, High school, Vocational/Technical School, Preschool/Other Schools, and Other School Supplies.

Data Note: The Spending Potential Index (SPI) is household-based, and represents the amount spent for a product or service relative to a national average of 100. Detail may not sum to totals due to rounding. This report is not a comprehensive list of all consumer spending variables therefore the variables in each section may not sum to totals.

Source: Esri forecasts for 2016 and 2021; Consumer Spending data are derived from the 2013 and 2014 Consumer Expenditure Surveys, Bureau of Labor Statistics.